



KINAWAH

VOLUME 2026

MARCH APRIL EDITION



Reflections for us on Anzac Day 2026 'STANDING ON THE SHOULDERS OF OUR FOREBEARS'

IN THIS ISSUE

Anzac Day Reflections	1
Editor's Notes	2
2025/2026 Committee	2
Johnno's Corner	3
Brekky Creek Lunch	3
Term 1 Highlights at WCC	4
What you said: hearing back from our readers	5
Barry Riddiford, "daring us to be different": with his own Slade/St Catharine's trip into the outback	6
The flight that opened Menyama	6
Seminal moments in the history of Slade	7
Past Slade naval pilot lost off Cornwall 1953	8
Light Horse deployed in Europe as well as Turkey	8
"The Water"... a breed of horse? Legend or fact?	9
Keeping safe online	10
Here, there and everywhere	11
New city of Warwick makes its mark and connections	12
Looking at Warwick through a very old lens	13
Leon Billing 1944-2025	14
Vale Peter Robertson	15
Facebook Update	16
Last Word	16



EVEN AS WWI BROKE OUT ON THE OTHER SIDE OF THE WORLD IN 1914, the opening chapter of the schools which ultimately became part of our shared story was being written. With 20 girls enrolled, Cambridge Ladies College opened in College Road Stanthorpe in 1905. By 1914, renamed St Catharine's Church of England Girls' High School (CEHS) the school had come under the administration of the Sisters of the Sacred Advent (SSA). Accounts tell us that St Catharine's 1912 roll consisted of 30 to 40 boarders plus about half that number enrolled as day girls. Winters were recalled with early morning "walks/gallops" to warm up before school lessons began. The shallow parts of the nearby creek were frequently iced over and thick frost and aromatic flowering wattle contributed to the winterscape.

Subsequently, CEGS opened in Warwick in 1918, then in 1936, the decision was taken to combine the Stanthorpe school with the Warwick campus under the control of the SSA.

100 years ago, in 1926, Slade opened in Horsman Road with 13 boys and all who were schooled in Warwick will doubtless agree that the above descriptions of winter in Stanthorpe were not dissimilar to our own winter memories with football, netball and hockey practice taking the place of walks/gallops to warm up.

Historically, the spectre of war has loomed large across all three campuses. With the outbreak of WWI, students and staff at the Stanthorpe school anxiously awaited news from abroad of loved ones serving overseas and pitted against a foreign foe. Bulletins were posted as soon as news arrived by sea and land. In WWII, many recent Slade graduates immediately enlisted and died overseas. And so we remember our fallen with the War Memorial Science Block and services on campus each year.

During WWII, once the Pacific war had afflicted Darwin, Townsville, Papua, New Guinea and Broome, both Warwick facilities were taxed to the limit to accommodate students from coastal areas evacuated inland in anticipation of likely Japanese occupation. Slit trenches were dug in our school grounds while rationing and shortages added further stress to budgets which struggled bravely to school and house the extra students.

The Korean War, June 1950 - July 1953, and then the Vietnam War, November 1955 - April 1975, involved still more of us and while our schools may no longer have been operating during the war in Iraq and Afghanistan, many of us have children and family who served in these conflicts.

For many years, our schools were operating on a war footing and/or picking up the pieces in the aftermath of war. This Anzac Day we pay our respects to the lives lost, the service of all who answered the call and those who kept the home fires burning.

LEST WE FORGET.

1965 MOMENTS

- Jan. 30:** State funeral in London for Sir Winston Churchill, 90 yrs.
- Feb. 15:** The maple leaf adopted as the flag of Canada.
- Feb. 21:** Malcolm X gunned down giving a speech in Harlem.
- Mar. 7:** Mass in the Catholic Church is said in local languages instead of Latin for the first time.
- Mar. 18:** Russian Alexei Leonov, the first man to walk in space.
- Mar. 20:** The 1965 Indo-Pakistani War begins: Kashmir still disputed
- Mar. 23:** NASA launches the first 2-man crew into orbit in Gemini 3.
- May 25:** Muhammed Ali knocks out Sonny Liston in Lewiston.
- May 31:** Jim Clark, a Scot, won Indianapolis 500, later becomes 1965 Formula One Champion.
- Jun 2:** The first Australian combat troops arrive in Vietnam.
- Jun. 19:** The sail-like shells of the Opera House roof appear as a focal point in Sydney Harbour.
- Jul. 14:** US Spacecraft Mariner 4 flies by Mars sending the first images back from the Red Planet.
- Aug. 8:** Lee Kuan Yew announces Singapore's independence and assumes the position of PM.
- Aug. 19:** The Frankfurt Auschwitz trials conclude.
- Sep. 9:** UN Secretary General, U Thant recommends China for UN membership
- Sep. 18:** Comet Ikeya-Seki first sighted by Japanese astronomers
- Oct. 8:** International Olympic Committee admits East Germany as a member.
- Oct. 10:** First group—of Cuban refugees travels to the US.
- Nov. 15:** Craig Breedlove sets a new land speed record of 966.574 km/hr.
- Dec. 5:** The "Glasnost Meeting" in Moscow becomes the first demonstration for civil rights in the Soviet Union.
- Dec. 30:** Ferdinand Marcos installed as 10th President of the Philippines

SCPSA Inc
www.scpsawarwick.com
info@scpsa.com.au

Editor
Joan (Clothier) White
28 Teesdale Avenue
Toowoomba QLD 4350
0428 344 853
kinawah.editor@scpsa.com.au

John Farquhar President
15 Quambone Street
Worongary QLD 4213
0401 917 811
Johnfarquhar6009@gmail.com

Are your contact details current or soon to change? DON'T FORGET to notify us of your NEW RESIDENTIAL & EMAIL ADDRESS & MOBILE PHONE NO.

If we don't have this last vital detail, we are unable to follow up failed emails when this happens.

ADDITIONALLY: IS YOUR CLASS MARKING ITS OWN MILESTONE in 2026 or 2027?

CAST YOUR NET WIDER FOR LOST CONTACTS AND ADVERTISE HERE OR POST ON OUR FACEBOOK PAGE AND PLEASE, BE SURE TO LET US KNOW ABOUT IT IF THIS IS HAPPENING!

Editor's Notes...



THIS IS THE LAST KINAWAH BEFORE OUR MAY celebrations. Plans for this historic occasion are about as complete as they can be at this stage and we are now anticipating what will surely be a truly memorable event. Those attending will have opportunity to see for themselves the substantial upgrades/modernisation that has been effected by the new owners of the Slade Campus and it is a sure thing most will be suitably astonished by the results. To read all about what is happening now at Warwick Christian College, check out Page 4.

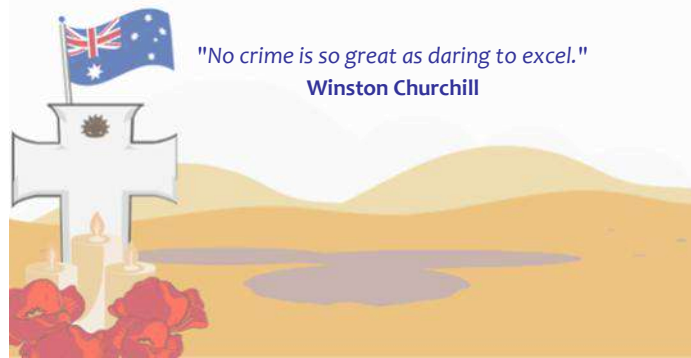
As usual, there is a strong Anzac focus in this March April issue of Kinawah beginning with my own reflections on Page 1. Featured inside, is an account of the 1953 loss off the coast of Cornwall of past Slade student, Neil Boden Page 8. We also include an account Page 9 of some of the hardest working operatives contributing hugely to allied successes in WWI and WWI: reference Australia's not-so-secret weapon, the Walers, which were shipped overseas and used extensively in Turkey, Europe and Africa. I also couldn't resist including them in a cameo appearance below right.

We finish our series of articles about staying safe online Page 10 and the final chapter of the original Trove article dating from the time Warwick was granted city status Page 12.

I hope you, like me, have been enjoying our "Looking at Warwick through a very old lens" series during the past couple of years. It really is amazing what is able to be found online when it comes to some of these wonderfully historic old photos. They certainly give us a window into a vanished era, a little bit of nostalgia and a better appreciation of the way things used to be.

Finally, we thank Leon's son, Greg Billing, for the eulogy he kindly supplied for our late friend who passed away in December last year.

Until next time, enjoy the read Joan White



"The ability to direct individual accomplishments towards organisational objectives ... is the fuel that allows common people to attain uncommon results."

Andrew Carnegie



2024/2025 Committee

EXECUTIVE

President	John Farquhar	0401 917 811
Vice President/Membership	Nigel Faulkner	0412 973 831
Secretary	Martin Taylor	0421 834 660
Treasurer	Cris Roy	0468 883 563

EX OFFICIO MEMBERS

Archivist/Patron	Ted Ross	0407 852 227
WCC Student Liaison	Grace Quach	0447 370 054
Slade CEGS Student Liaison	Lizzie Adams	0427 004 673
Kinawah /Contacts	Joan White	0428 344 853
Pastoral Coordinator	Rob Nolan	0439 784 457
Museum/Website	Leigh Nisbet	0418 156 296
Assistant Archivist	Helen Moloney	07 4635 0573
Area Reps	Ray Dickson	0419 702 657
	Paul Masson	07 4623 5307
	Peter Ramsay	07 3245 4706
	Irene Woods	07 4655 3078

johnfarquhar6009@gmail.com
nigel.faulkner@hotmail.com
mmbtaylor@hotmail.com
crisroy1@gmail.com

cro56704@outlook.com
thien.an.graceq@gmail.com
lizzie0adams@gmail.com
kinawah.editor@scpsa.com.au
rw.nolan@outlook.com
leenis@bigpond.com
hmloney@aapt.net.au
dicksonsare@gmail.com
pbmasson@bigpond.com
peterramsay47@gmail.com
iczzjc@gmail.com



Johnno's Corner

A BIG "WELL DONE" TO WCC WITH STUDENT NUMBERS REACHING 230. The choice of parents to enrol their children at WCC reflects the dedication of the College teaching staff. Those attending the Centenary will be impressed by the facilities at the College and the way it has been maintained.

■ Not long now until our Centenary weekend. I hope everyone has their travel plans and accommodation sorted. I'm certainly looking forward to catching up with old friends and meeting new ones. Now there are two important things to remember for such an occasion as this :

- 1) Never let the truth get in the way of a good yarn and
- 2) The older you get the better you used to be ie refer to 1.

■ Has anyone given Barry Riddiford's "Dare to be Different" outback adventure any thought ? I would say that if Barry was a muster dog he would be an "Ernie Dingo / Leyland Brothers" cross !! Barry has been doing these trips for quite a few years now with returned service personnel. He has a lot of knowledge about the bush and is able to take us places that are not normally known to the average punter. Barry will be at the Centenary if you would like to catch up with him. I've got one spare seat in my ute for anyone interested.

■ The big wet continues up north, I hope for our farmers that it is doing more good than harm.

■ And as always, remember to ring your old mates and check in on them, it may just make their day.

Until next time, take care of yourselves. Johnno

SCPSA official website:
www.scpsawarwick.com

COMING UP IN 2026

Apr. 5 Easter Day

Apr. 24 WCC Anzac Service 10.30am

Apr. 25 Anzac Day

March. 20-22 Warwick Show

May. 2-3 Slade Centenary Warwick

July. 16-26 Jumpers & Jazz in July

October. 20-25 Warwick Rodeo

Nov. 7 Brekky Creek Lunch

Nov. 11 Remembrance Day



PAYMENT DETAILS TO REGISTER AS A SCPSA MEMBER OR RENEW EXISTING MEMBERSHIP:
BSB: 124001 ACCOUNT NO: 90641027 ACCOUNT NAME: SLADE CAMPUS PAST STUDENTS ASSOCIATION
REFERENCE: YOUR INITIALS AND SURNAME FORMS FOR NEW MEMBERS ARE AVAILABLE ON REQUEST



2026 CENTENARY CELEBRATIONS are generously supported by SOUTHERN DOWNS REGIONAL COUNCIL as part of its of its Community Grants Funding



2026 SLADE PAST STUDENTS ARE CELEBRATING MAY 2-3



SINCE SLADE'S FOUNDATION BACK IN 1926

PLEASE NOTE VENUE CAPACITY FOR THIS FUNCTION AT THIS POINT IS ONLY A FRACTION SHORT OF ITS LIMITS



**Saturday, November 7
11.00 AM FOR LUNCH**



2026 Brekky Creek Lunch
18th ANNUAL GATHERING FOR
Slade/St Catharine's/WCC Past Students
2 Kingsford Smith Drive - Breakfast Creek. 4020

- Get together in an area set aside for us at the front
- Purchase your own drinks and meals
- Partners etc. are more than welcome
- No speeches or formal proceedings
- Catch up with old classmates in a relaxed atmosphere

WANT TO KNOW MORE? CONTACT
Richard Cleal: 0447 447 236
rcleal@bigpond.net.au



Term 1 Highlights at 70 Horsman Rd

AS WE CONTINUE THROUGH A FULL AND FRUITFUL START TO THE YEAR, we are excited to share more about our new College vision theme for 2026 — "CALLED TO GARDEN". This theme beautifully captures our shared mission as a college community. Just as a garden requires intentional care, patience and faithfulness, so does the growth of our young people.

Each day we are called to faithfully tend to the hearts and minds of our students — cultivating character, nurturing gifts, and creating an environment where they can flourish. Every lesson, conversation, training session and prayer is an opportunity to grow together and honour God in the work we do.

We are also grateful to see our college continuing to grow significantly. This year, we have reached an enrolment of 230 students, a milestone that reflects the strength and reputation of our community. With this growth comes great opportunity, and we are incredibly blessed to be supported by a team of highly skilled, passionate and dedicated teachers. Their professionalism, care and commitment to excellence ensure that our students are both challenged and nurtured each day. It is through their faithful service that our vision is lived out so authentically in classrooms across the college.

A highlight of the term was our recent House Day — a significant occasion for our community. It was a wonderful celebration of the strength, spirit and unity within our House system. The energy and enthusiasm on display reflected the strong sense of belonging that exists across our college. Importantly, House Day also provided a special opportunity to officially welcome and initiate our new families into college life. It was a joy to see connections forming, friendships strengthening and our community growing deeper together.

This term has certainly been a busy one in the sporting arena. Students have proudly represented the college at both Southern Downs and Border District competitions across a range of sports. We are thrilled to see several students now progressing to regional selection — a testament not only to their skill and dedication, but also to their perseverance and commitment to training. Our swimming season has also commenced, with students competing at Southern Downs and All Schools competitions. We commend all students who have stepped out to compete, challenge themselves and represent the College with integrity and sportsmanship.

Camps have also been a significant part of the term, providing rich opportunities for growth beyond the classroom. Our Year 5/6 students enjoyed an action-packed experience at Glengarry. Our Year 9/10 cohort embraced the challenges of Emu Gully, and our Year 11/12 students travelled to Lennox Heads. Each camp focused on building teamwork, resilience, and courage. Students were encouraged to step outside their comfort zones, support one another and take courageous steps toward strengthening their community. These shared experiences create lasting memories and deepen the bonds that help our students thrive together.

We have also been grateful to welcome organisations that support the holistic development of our students. Our Primary students participated in engaging sessions with Character Builders, focusing on friendship, resilience and respect — essential qualities as they grow socially and emotionally. Healthy Harold visited to deliver valuable learning around nutrition, wellbeing and making positive choices. These programs complement the learning happening in classrooms and reinforce our commitment to nurturing the whole child.

As we reflect on the term so far, we are thankful for the many ways our community continues to live out our vision. Whether in the classroom, on the sporting field, through camps, or in wellbeing initiatives, we remain committed to faithfully tending the garden entrusted to us.

May we continue to cultivate hearts that are resilient, minds that are curious, and a community that honours God in all we do.



What you said: hearing back from our readers

Your contributions, as always, are greatly appreciated. Selected and edited reader responses appear below.

It is always a delight to hear back from our far flung readership after notifications are sent out.

Here is some of your feedback...



Greg Tweedie 1966-66 Many thanks Joan. Packed with interesting news and updates.

Eddie Wickham 1964-65 Regards the January-February Last Word – the old party line system for telephone calls: In June 1948 my father, C R Wickham, drove his International KS5 truck from Aubynlea Karara west of Warwick to Newcastle to buy wire for what was to be the new telephone service. He also brought back barbed wire, some of which he sold to various farmers on the return trip. The cost of the wire was £102-0-6. The party line service to the properties Aubynlea, Berridale and St Aubyn was connected on 15 May 1950. I recall the phone being powered by two 9 volt dry cell batteries and vaguely remember the codes for the three on the party line, I think ours was 18U. The local exchange would have to remember all the codes for every phone connected to their switch board.

Philippa Wetherell ...Many thanks for the superb work you have done over all these years editing KINAWAH. I came to St Catharine's School Warwick as Sister Philippa SSA in August 1967 and you were a terrific leader at that time as JOAN CLOTHIER, someone I will always remember and give thanks for. May you continue in the role that is uniquely yours into the future'. A thousand thanks, Joan. Philippa (Now in her 88th year!)

In January I sent Greg Billing (Leon Billing's son) the photo which appears below to use if he would like to include it in his photo presentation for Leon's funeral. This was his response...

Greg Billing Thankyou so much for the wonderful football photo! It's a beauty! I actually think they have a "typo" error on the plaque - as it says "1st IV" which is 1st 4. An interesting one - had a giggle!

*Editor's Note: Greg is correct. The caption should have been XV and I have to admit, I didn't notice the error before sending it off to him! For my part, I remain grateful we enjoy the luxury of using Arabic notation. It's so much less cumbersome and far easier to use. Imagine long division and working our way through square roots and Algebra equations using Roman numerals! It quite simply doesn't bear thinking about.



Slade 1960 First IV

Top Row: Robbins, N. McEwan, A. McDonald, B. Dunn

Second row: R. Watson, L. Billing, C. James, R. Carney, Self

Third row; R Hanson, B. Crosby, R. Mace, P Carter, J. Kearney

Front row: R. Menkins, D. Johnston, H. Breden (Capt), K. Dan, G. Shirley, J. Henning, D. Jackson

Of those listed above we are:

CURRENTLY IN CONTACT WITH: Angus McDonald, Ray Menkins, Howard Breden and Gordon Shirley.

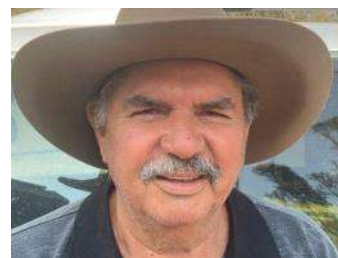
DECEASED: Ron Watson, Leon Billing, Colin James, Keith Dan, Brian Self, Peter Carter, David Robbins, John Henning and David Jackson

CURRENT STATUS UNKNOWN: David Robbins, Neville McEwan, Barry Dunn, Ross Carney, Richard Hanson, B Crosby, Ross Mace, John Kearney and D Johnston. If you are able to supply any information about them we would very much appreciate this.

Barry Riddiford, "daring us to be different" WITH A SLADE / ST CATHARINE'S PERSONALISED TRIP INTO THE OUTBACK

As Barry notes, "There are some friendships that never really fade. You might not see each other for years, but plonk a map on the table, light a fire, open a rum bottle and throw away the lid, and suddenly it's like you're back where it all started. And there may

also be some who never went to school with me but because we went to Slade, then that's our connection...



"In August 2026, I'm heading west on a 'Dare to Be Different' Outback Adventure, and I'd love a few old school mates to come along for the ride. No restrictions on numbers.

"This isn't a tour bus trip or a rush-through holiday. It's a proper outback loop — long roads, big skies, campfires, country pubs, race meeting and a rodeo, sculpture trails, stories, laughs, and time to just be. The sort of trip where conversations wander, memories resurface, and the days don't feel measured.

"We'll take it steady. Most of the road is sealed, the dirt is well-maintained, and there's plenty of time built in to stop, explore, or just sit back and take it all in. No heroics required — just a sense of curiosity and a willingness to say "yes".

"If you've ever thought: 'One day we should do a trip like that' — well, this is that day/fortnight.

"Come for a few days or the whole journey. Bring your partner, your whole extended family, any of your mates or just yourself. All I'm really offering is the opportunity, maybe some good company, open Outback Channel country, and the chance to share an experience rather than talk about doing it...someday. If this stirs something, reach out. Let's dare to be different — together." Barry



Barry went to Slade 1971-1975. He grew up in SW Qld on properties where his family were fencers. After leaving Slade, he went back out and worked on a couple of cattle and sheep properties around Quilpie. So if you want to get to learn his story, join in on the Adventure of a lifetime.

And to briefly focus on PNG...

THE FLIGHT THAT OPENED MENYAMYA

Many of our past students came away to boarding school in Warwick from Papua and New Guinea and we are still in contact with many of them. David Herbert, like several of them, called Rabaul home and sent us the following story.

ON 2 SEPTEMBER 1933, a fragile biplane lifted off from Salamaua and headed inland toward the rugged heart of Morobe. At the controls was pioneering aviator Tommy O'Dea, flying a De Havilland DH.50 into what was then one of the most secluded places in New Guinea — Menyamya, long known in early colonial accounts as the home of the



feared Kukukuku warriors. The supervision and preparation of the Menyamya landing strip for this historic arrival was carried out by pioneer kiap J.K. McCarthy, whose patrol work and administrative foresight made the flight possible.

This was more than an inaugural flight. It highlighted Salamaua's central role in opening up New Guinea, serving as a coastal gateway from which aviation pushed inland, linking isolated valleys to administration, mission work, trade, and human connection. From this small but strategic outpost, mountains were crossed and formerly impossible distances to travel became manageable.

The moment is recorded in *Plumes and Arrows* by Colin Simpson, preserving an era when aviation symbolised courage, curiosity, and national possibility. More than 90 years later, the contrast is striking. Menyamya still has an airstrip — a visible reminder of connection — but planes no longer fly there. In Salamaua, the old airstrip near the Francisco River (pictured), once alive with engines and ambition, is now covered by bush, quietly reclaimed by nature. Yet the legacy endures. That 1933 flight reminds us that Papua New Guinea was opened not by accident, but by bold vision and brave individuals — and that Salamaua once stood at the very heart of that historic transformation, while places like Menyamya still wait for the return of wings.



Seminal moments in the history of Slade #7

2 years after Slade's close, hope briefly finds new wings

WHEN THE LATE KEN MARDON RAISED THE FLAG alongside Churchie's Dainley McAllister to kick off Slade's 75th reunion celebrations in 2001, the oldest and youngest students associated with the campus stood together on that day representing a meeting of two quite different iterations in the life of the Horsman Road school.

Ken, a foundation student of Slade, was uniquely able to remember many of the growing pains of getting the school established when there was no hot water for showers and when, in that first year, during which Slade House, formerly the Eastmont residence, served duty as a multi-purpose dormitory, classroom, dining room and staff quarters. Ken never dwelt on these hardships, simply accepting that they were part of his past and the challenging beginnings that contributed to the unique character and pride of Slade.

The parishioners of St Mark's, had raised funds to found a school for boys which would complement the Church of England Girls' School which had already opened in 1918. Some of the wealthier businessmen and landholders in the wider Warwick community who were members of St Mark's congregation contributed both in money and in kind to help make this a reality. William Ball Slade, for whom Slade was ultimately named, was one of these.

W.B. Slade, a local pastoralist is pictured below with his family at the homestead on Glengallon Station where he was a partner/manager for a time. (Photo kindly supplied by his granddaughter, Jane Morse.) Glengallon was much later bequeathed to Slade but that is another tale and may be studied more fully in the 2022 September October Kinawah: "Glengallon, saga on an epic scale". It is available



for you to read on our website: www.scpawarwick.com

That 1926 opening day was a feat of sorts, less than eight years after the Armistice date, 11 November 1918, coupled with the heavy toll WWI exacted on Warwick and district.

Dainley McAllister, standing beside Ken Mardon in 2001 at those 75th celebrations, understood a little of the history he was now part of (he came to Slade from The Gap in Slade's final year) and we have no idea where he is now (he has no Facebook presence). We feel, however, that as part of the Anglican Church Grammar School, Dainley's debut at the Slade Campus bore little resemblance to the one that Ken Mardon, a Warwick boy, remembered. Churchie, a GPS school in East Brisbane is an elite school that caters for a much wealthier clientele than Slade ever aimed to attract.

Our Association however, remains grateful for Churchie's willing consent for Slade to hold its 75th celebrations at the place that remains fixed in our collective memory as part of our past.

Churchie's tenure at Slade proved almost indecently brief. They abandoned their Outward Bound experiment after just five years, pulling up stakes and returning to Brisbane but not before selling off property that the founders had worked diligently to acquire.



As has been noted before, one big plus re the Churchie phase in our history is that the ACGS brought us Kel Williamson. Kel, who had a background in the Army Catering Corps, stayed in Warwick living on the campus after the ACGS decamped, a firm supporter of Slade and SCPSA until his untimely 2019 death. He was on site when it was purchased by Christian Community Ministries and catered several of our reunions including CEGS own 100 year celebrations in 2018 preparing a superb meal and overseeing numerous other details. He is held in

high regard as a friend of SCPSA, and as stated before, was a bridge over troubled waters when it seemed the campus was going to be sold off and developed as a housing estate. Over the years SCPSA has contributed substantial sums to the upkeep of the Founders Room and Honour Room and other works and Kel was ever ready and willing to help out while he was able. He is shown here with Peter Ramsay helping out with one of these projects.

In our brief synopsis of Slade's history in this and recent issues we have not, as yet listed those we refer to as The Founders. Here are portraits of the following, arranged clockwise from the 9 o'clock position: Rev. William Downing Glover, John Hawkins Smith Barnes, William Ball Slade and John Davis Rowland.



Also involved in the planning and establishment of Slade were Robert Monserratt Stephenson, Charles Edward MacDougall and Rowland Macansh.

We honour the vision and commitment of these men and their families to this modest educational facility that was founded bravely and persevered through changing times, adversity and success to produce sons and daughters of whom we can all be justly proud.

Patribus digni estote



Past Slade naval pilot lost off Cornwall 1953

THIS ANZAC DAY WE REMEMBER NEIL BODEN who attended Slade 1944-46. He was awarded the Best and Fairest Cup for Boxing in both 1945 and 1946.

Acting Sub Lieutenant Royal Australian Navy Captain Neil Boden R47468 was born 27th May 1931 at Cairns, North Qld.

He enlisted in the Royal Australian Navy, Melbourne, 12th May 1952, for 6 years.

His mother, Mabel Boden, was listed as next-of-kin. At the time, the RAN was actively seeking direct entry Naval Airman Trainees for RAN Fleet Air Arm, which is the branch Boden volunteered for.

Boden was drafted 12th May 1952 to HMAS Cerberus on Western Port Bay south of Melbourne, to begin basic training as a naval recruit, then for Aircrew assessment. Having passed the necessary qualifications he was rated Probational Naval Airman (Aircrew) 12th August 1952 and drafted to the RAAF base at Archerfield, near Brisbane, where he was enrolled in the No.1 Flying Training School to commence training as a pilot. The course covered flight theory and aeronautical knowledge, followed by practical exercises flying the DH 82 Tiger Moth. After reaching the required standard and necessary hours on Tiger Moths, Boden was transferred to RAAF Uranquinty, in country NSW, joining the No.1 Basic Flying School for further weapons and combat training in the more powerful Wirraway aircraft.

After graduating 15th September 1953 with his 'wings', Boden transferred to HMAS Cerberus for a Divisional Course and to be promoted Acting Sub-Lieutenant.

His next move was to the UK for advanced training with the RN FAA, embarking on RMS Strathmore at Port Melbourne 22nd September 1953 for passage.

Neil Boden arrived in the UK 25th October 1953 and was posted to



HMS Seahawk (RNAS Culdrose) near Helston, Cornwall. There he joined the Operational Flying School Part 1 Course. Instruction on that course would have included development of flying skills, defensive techniques, weapons training, fleet exercises and deck landings on an aircraft carrier.

The training was intense and also involved anti-submarine exercises with long-range flights over the ocean in a Fairey Firefly aircraft. 9th December 1953, Acting Sub-Lieutenant (P) Neil Boden

RAN failed to return from a solo flight along the coast of Cornwall's Lizard Peninsula in Fairey Firefly PP587.

A contemporary newspaper article at that time reported holiday makers near Fal-mouth first raised the alarm on hearing an aircraft flying close to the sea followed by the sound of an impact. Fog was reported over the ocean at that time.

A search in the area of impact was conducted, with reports of an oil slick on the surface - but other than that, no trace of him or his aircraft was ever discovered, and he was declared missing, presumed dead'.

As Boden's remains were never found, he has no known grave.

The information for this article was compiled by Kim Dunstan from the following <https://www.faaaa.asn.au>

References: National Archives of Australia state that some records are illegible—Wikipedia.

Photo at right was featured in the 1953 Slade Magazine by permission of the Navy Board. Neil is shown here receiving his wings for the Fleet Air Arm.



A Fairey Firefly of the type that Neil Bowden was flying when he was lost at sea in December 1953



Light Horse deployed in Europe as well as Turkey

WHEN WE THINK OF OUR CAVALRY TROOPS we generally think first of all of those heroes (both men and horses) who secured the wells at Beersheba in what has famously become known as The Charge of the Light Brigade. What is perhaps not so well known, is that our Light Horse troops were also used extensively in Europe in WWI. They were engaged in the fighting at Fromelles, Baupaume, Bullecourt, Ypres, Passchendale, Mt St Quentin and the Hindenberg Line (see photo below). Clearly there is plenty of material here for a future Kinawah article. However, this brief mention serves as a tiny introduction to the story overleaf which explores the history, mystique and service of those hardy Australian horses who have become known as Walers.



Light Horse in France 1916-1918 <https://www.lancers.org.au> See overleaf

“The Waler”... a breed of horse? Legend or fact?

THE AUSTRALIAN LIGHT HORSE was a skilled formation of mounted infantry of the Australian Imperial Force (AIF). Waler horses were the primary mounts for the Australian Light Horse during WW1...



The name, 'Waler' is derived from their breeding origins in New South Wales, where they were originally known as 'New South Walers'.

Walers were strong, hardy, and well-suited to the desert conditions of Egypt and Palestine. In WW1, Light Horsemen fought at Gallipoli (without their horses) and mostly served in Egypt and the Middle East. They were known for their very brave charges at Gallipoli at the Nek (without their horses) and Beersheba, and were a vital part of the Allied victory against the Ottoman Empire, during WW1.

In the inter-war years, several regiments were raised as part of Australia's part-time military force. These units were gradually mechanised either before or during WW2, although only a small number undertook operational service during WW2. A number of Australian Light Horse units are still in existence today. The Light Horse also served in the Second Boer War (1899–1902).

Lest We Forget.

It is thought that this photo is of Sergeant F. H. Wharton of the Australian Light Horse with horse and pack mule, during WW1. Photograph comes from the State Library of South Australia. Image file number PRG 1480/2/68.

TO SPEAK OF THE WALER IN THE HORSE WORLD instinctively arouses memories of Australian remounts that went to war with the Australian Light Horse in WWI. Like the Troopers who rode them, they performed with skill, daring and considerable endurance to effectively help put Turkey out of the war. Much sentiment and nostalgia of these remounts has survived the years until today, and they are remembered as a “breed” of Walers.

This has led many to the emphatic belief that these horses were a type evolved and bred with the express purpose of supplying a warhorse for Military use. It is not so. They were Australian Stock Horses who happened to be around and available in time of war for military use by Mounted Troops. They were not exclusively used by the Australian Light Horse during WWI, but purchased in large numbers as mounts for Cavalry Units from India, New Zealand, Britain and other places. They did, however, have an affiliation with military service long before then, being purchased in large numbers by the Indian Army in the 19th and 20th century. In much smaller numbers they were sold to the Dutch East Indies, the Philippines and Japan.

The problem concerning us is how and why they became known as Walers. Were they a specifically bred animal for the purpose of war, or were they a horse bred by our early settlers for use in our great expanding pastoral industry as beast of burden, for transportation and for pleasure? I maintain the latter is true. I know that there is no such thing as a Waler breeder or indeed an identifiable type distinct from our Australian Stock Horse. Why then call a breed The Waler and how did it occur?

From our first settled areas of Botany Bay and Sydney, exploration and settlement spread north, south and inland. One of the earliest of these was the Hunter River Valley, which proved to be one of the great horse breeding areas of the world.

Pastoralists of English, Irish, and Scottish backgrounds imported the best bloodlines available from their own countries and set about creating history by breeding superb horses for Australian needs. Their task had the advantage of nature's help by way of climate, soil and pasture eminently suited to horse breeding.

When the Indian Army began purchasing remounts for its Mounted Army, the Hunter Valley provided many of its horses. Being the first settled, it had the benefit of numbers and the pastoralists foresight in selecting and importing the best of English and Irish thoroughbred bloodlines. Owning one in India became a status symbol whether used as a military charger, for polo, for pigsticking, or for riding pleasure. To own and ride one was paramount to being behind the wheel of a Mercedes today. The Indian Officers in speaking of these horses classified them as Walers because of their New South Wales origin.

From then on, the term Waler was used to designate all of our horses that went to war, regardless of whether they came from Cape York Peninsula, Western Australia or anywhere else in between. To call them a breed is nonsense. They have always been Australian stock horses bred for that purpose and no other. That they proved suitable for remount usage is something our early pastoralists can take credit for.

I have no gripe about them being known as Walers. I too am happy to call them that. Those used for military service deserve a distinctive title by which to remember them.

The Australian Soldier is known as a Digger and it would be wrong to suggest that he was bred for war! Both he and the Waler happened to be available when needed for that purpose and proved more than adequate to the task without thought of generic engineering. ∞

This article is courtesy of Jack Scott and taken from The Australian Light Horse Association website



HERE THERE AND EVERYWHERE

Our eclectic mix of news items this time takes in cockatoo and banana fixes and Hornets in the skies!

SQUAWK-BACK RADIO MAKES NORTH QLD NEWS

DOUGLAS FM came close to suffering a full broadcast blackout when **ROGUE COCKATOOS** found a Port Douglas radio station's FM antenna too tempting to nibble on. This feathered assault left critical equipment components exposed to the elements and was discovered when the signal strength "fell off a cliff" during a period of heavy rain. After temporary waterproofing, the station secured a \$12,000 grant for repairs and to keep the cockatoos at bay through the Community Broadcasting Program.

Note: This caught my eye, reminding me of the over-friendly galah near the cabins where we were staying at Hungry Head, NSW years ago. It found the windscreen rubber of our "almost new" car a good chew (true story). I have an idea a few of our readers might have similar tales they could relate?

WILD BANANA STRAIN COULD SAVE CAVENDISH



Researchers have cracked the genetic code of what is described as an inedible wild banana to create a natural shield against the banana-infecting Panama disease destroying global banana crops. In a five-year study, scientists from The University of QLD have pinpointed the DNA

needed to fight off fungal Fusarium wilt, known as Panama TR4, a soil borne disease that wipes out the common Cavendish banana. TR4 was first found in Australia on farms in the Tully Valley south of Cairns, in 2015.

Doctor Andrew Chen and Professor Elizabeth Aitken noted that while the wild Calcutta 4 fruit itself isn't fit for the lunch box, its genetics are "gold" for farmers. Importantly, this is the first genetic dissection of Race 4 resistance from this wild subspecies. The next step is to develop molecular markers to track the resistance trait efficiently enabling plant breeders to screen seedlings early and accurately before any disease symptoms appear. This should speed up selection, reduce costs and hopefully ultimately lead to a banana that is good to eat, easy to farm and naturally protected from Fusarium wilt through its genetics. In just a few years, Australia could be selling the first GM bananas in the world.

For more info visit: <https://www.abc.net.au/news/science/2025-10-26/gm-banana-qcav-4-genetic-modification-stops-panama-disease-tr4/105761042>

ICONIC AUSSIE BRAND FUELS GOUT GOUT

Rising sprint star, **GOUT GOUT** has secured a partnership with Australian household brand, Vegemite. The Ipswich born sprinter said that Vegemite and avocado on his toast has been his secret weapon for a while but noted that he supposed that now this was not-so-secret any more.



The 18-year-old produced his best ever run in his first run of the new 2026 summer season and is closing in on the famed 10-second mark after recording 10.00 (+0.9) seconds in his first race at the distance at the Dane Bird-Smith Shield Meet at QSAC in Brisbane 21/02/2026. Gout Gout's name has been the subject of much comment. The family name, Guot Guot, was incorrectly recorded due to miscommunication and language issues during the migration process.



SUPER HORNETS OVER EASTERN DOWNS SKIES

NO. 1 SQDN F/A-18F SUPER HORNET AIRCRAFT from the Amberley RAAF Base recently flew aircrew familiarisation and diversion training out of the airport correctly titled Brisbane West, Wellcamp. All low-level flying activities were conducted within strict safety/operational guidelines and subject to change due to such variables as air

traffic control requirements, weather, and other aviation considerations. As always, noise reduction and the environment are vital considerations in the planning and conduct of military flying as Oakey residents well know.

WASTE TRANSFER OR TREASURE TROVE?

A recent writer to our local newspaper nostalgically recalled that one of the wonderful things about growing up back when he (and many of us) did, was scavenging at the local tip, now more grandly referred to as the "Waste Management Facility", "Transfer Station" or other sweeter smelling appellations in the pursuit of political correctness. He reminisced about amazing treasures that might be found. These might include bits and pieces from old radios which could play an important part in building a crystal set; wheels on bikes and scooters to give your billy cart the advantage over rivals in the annual billy cart grand prix, and endless rolls of chicken wire to keep your chooks protected from foxes.

Scavenging was popular with dads too and his mother often wondered why a simple trip to the local tip could last three or four hours. The truth was that his dad would catch up with his mates, scan the piles of rubbish for trash and treasure and polish off a carton of warm "Toohey's New" with them.

I happen to know for a fact that some of the exhibits on show at the famous Miles Historical Museum were scavenged from the tip by late Miles and Toowoomba identity, Bud Ford. Bud grew up and raised his family touting the motto of the Boston Millionaires from the Great Depression, "Use it up, Wear it out, Make do, Do without". In today's sadly disposable society, this principle seems to have become a long forgotten memory.

'OUTBACK INSTINCTS' TURNS YOUNG LIVES AROUND

By providing safe, consistent and respectful environments, this proactive initiative is changing young lives in rural and regional communities by creating pathways into training, employment and community participation. Its programs are designed to reduce social isolation and disengagement, support early intervention for mental health and behavioural challenges by strengthening routine, connection and a sense of belonging. This helps young people to feel seen, valued and capable, often for the first time.

Outback Instincts offers grass-roots, hands-on, farm-based youth programs for young people who are disengaged, isolated, or doing it tough. Based in regional QLD, it works alongside young people to build confidence, stability and purpose through animals, land and real-world learning, supporting those who don't thrive in traditional systems offering a practical, alternative that values responsibility, routine and genuine connection.

Its whole-of-person approach to individual development, combines practical, land-based education, life and employability skills, trauma-informed, supportive environments and strong community and industry connections. "Learning by doing" happens while caring for animals, working on the land, building skills, and contributing meaningfully to community.

Through collaboration with local industry, training providers and community partners, real pathways into vocational skills, employment and ongoing connection are created to support long-term outcomes, not short-term fixes. Outback Instincts is dedicated to expanding access and equity for young people in rural and remote areas who are often overlooked by mainstream services and already has chalked up several successes with previously at-risk young people.

OLD MYER CENTRE APPROACHES A NEW PHASE

As noted in our last May June Kinawah, our own Michael Brown, as group chairman of REMM Pty Ltd, played a large part in building iconic former shopping destination, the Myer Centre in Brisbane's Queen Street Mall. This was subsequently redeveloped and rebranded as Uptown in August 2023 and now is set to undergo further upgrades. Retail giant, Vicinity Centres has confirmed it will be the sole owner after agreeing to buy out its former partner IMF Investors' 75% share. Vicinity Centres has held a 25% stake in the property since 2012 and has just exercised its rights to acquire the rest of the asset in a deal worth \$212m. Since Myer left the six-storey shopping centre, it has only been partly occupied but now a proposed \$400m to \$500m development plan includes an aquarium, arcade, laser tag arena, and an indoor ski-field.

New city of Warwick makes its mark and connections

WARWICK 1847-1936: THIS IS THE FINAL PART THE STORY WE HAVE BEEN RUNNING OF WARWICK'S GAINING CITY STATUS: This Brisbane Telegraph story appeared 2/06/1936 and so "today" always relates to 1936. Some family names, familiar to us may be recognisable in the text!

The Warwick City Council area covers an area of 8 square miles and the unimproved valuation of its ratable lands is £281,445. Evidence of the existence of a bountiful water supply is the bright appearance of the gardens in the main public parks and also those of the citizens. With foresight and enterprise the Warwick City Council embarked upon a big water scheme some years ago. To-day it is known as the Silverwood scheme, the basis of which is the Connolly dam on Rosenthal Creek, with catchment area of 37 sq. miles and some miles distant from Warwick. At a cost of £150,000 it has assured an adequate and sufficient water supply for the city, which previously endured many anxious moments as it watched the waters in the Condamine slowly receding and its supply therefore diminishing. The water in the Condamine sometimes was also questionable as regards its quality.

Connolly dam water falls by gravitation to a reservoir on Bacon's Hill (capacity 750,000 gallons). The Railways Depart. takes water from the Warwick City Council which also supplies parts of Mill Hill, the supply from Bacon's Hill reservoir. A tender has been let to the Marbarete Company of Brisbane to build another reservoir (750,000 gallons) at Mill Hill. The tender price for the reservoir alone is £4,565 9s. 6d.

The Silverwood scheme was opened on April 5, 1930, by Minister for Lands, Mr. W. A. Deacon, (storage capacity 750,000,000 gallons). Owing to the continued dry weather in the district, water in the dam was recently at a point lower than it had ever been before since its construction.

With the provision of an adequate water supply, Warwick now turns to providing a sewerage system, and the applications have been called for a competent sewerage engineer to advise the council on the matter.

Secondary industries include the butter factory of the Warwick Co-operative Dairy Association, Barnes flour mills, the Farmers' Milling Company's flour mill and Millhill, Gilham's timber mill, Webb's bacon factory and Hewitson's timber mill at East Warwick. These mills give employment to a large number of hands.

As an important rail centre, several employees are on Warwick's pay list at its station, goods and locomotive departments.

Of its public institutions there is none of which Warwick is more proud than its District Hospital, whose board is presided over by Mr. P. G. Knyvett, the Police Magistrate at Warwick. Improvements include lounges for male and female convalescent patients, men's and children's wards, 12 new private wards, and new nurses' quarters at a cost of £23,000, carried out via debentures from the Commonwealth Bank, four of which have already been paid off.

A pleasing feature of the provision of additional accommodation was the ready response of the public who furnished the whole of the 19 wards for private patients, and the men's and children's wards. Gifts of furniture and other articles were also made. The private ward is known as the Jacob Horwitz ward. Warwick Hospital is recognised as one of the most up-to-date in the State.

Warwick Fire Brigade is also modernly equipped and housed. A new station for the brigade was built last year at a cost of £2,500. This volunteer brigade has a permanent superintendent, Mr. W. Morrison, and has shown efficiency in dealing with outbreaks of fires.

The Ambulance Brigade is equipped with three motor ambulance cars, and has a highly efficient staff. During the year ended June, 1935, the brigade attended to 1,690 cases and travelled 11,189 miles. During the 33 years ended June 30, 1935, brigade staff attended 34,360 calls and travelled 298,375 miles. The chairman of the committee is Mr. C. P. Barnes, who represented Warwick faithfully and well in the State Parliament for 27 years.

Organisations include a Chamber of Commerce, President Mr S. Maxwell,

R.A.C.Q. Branch, President Mr Hugh Millar, Rotary Club, President Mr S. Maxwell, R.S.S.I.L.A. Branch, President, Dr J. S. Smythe; two branches of the Country Women's Association, the Warwick branch, Mrs A. S. McDougall, president, Condamine Valley branch, Mrs R. Greene president. Warwick's C.W.A. branch has Mrs Henry Sterne as one of its members. Mrs Sterne was president of the branch for 10 years, and is now State treasurer and deputationist to Government departments, but is now in England and will go across to America this month to represent QLD and other States at the conference of country women of the world at Washington.

The following figures show how Warwick's population steadily grew up to 1901 and then took an upward rise:-

1871	2473	1876	3152	1831	3596
1886 ...	3073	1891	3402	1901....	3836
1911....	5248	1921....	6091	1933....	6664

These were the census figures for the respective years.

To-day the population of Warwick is round about 8,000.

What wonderful progress has been made in the primary industries of the Darling Downs since the Leslies founded the first at Toolburra in 1840! This garden of QLD was first seen by Allan Cunningham in 1827. On returning to Sydney he described the country as clothed "with grasses and herbage exhibiting an extraordinary luxuriance of growth." Cunningham was enraptured with the country and many a time must have discoursed with his friend, Patrick Leslie, on the rich vision he had been privileged to look on. Yet it did not start to be developed for many years even more surprising as Cunningham had shown that the gap which he had named a natural port for the Warwick end of the Downs was no more than about 100 miles distant.

For many years after the squatters had come and Warwick was established, progress of the township was slow. Large station holdings kept the land locked up; the small and more numerous settlers could not get a footing. The low range of hills surrounding the Darling Downs encloses over 2,000,000 acres of land of a quality which invited the plough to convert it into the granary of the State. But travellers in those days saw only paddock after paddock of sheep, cattle and horses, and again more sheep. This could not continue.

Big properties were bought by the Government, cut up into farms of from 80 acres upwards, and sold to farmers .

Mixed farming and dairying sprang up everywhere on the Downs. Warwick went ahead and smaller townships came into being all over the rich agricultural belt.

The establishment and growth of the dairying industry was a great factor in the progress of Warwick. To dairymen much of the prosperity of the Downs farmers is due.

In 1903 a butter factory was opened with a paid-up capital of £1,231, and suppliers were paid £722 for cream and milk. The Warwick Co-operative Dairy Association, Ltd., now has branch factories at Allora, Texas, and Goondiwindi, and cheese factories at Elbow Valley, Talgai, Boney Mountain, Victoria Hill, Pratten, Lord John Swamp, and Greymere.

The company paid £229,293 to its suppliers in 1935, its paid-up capital was £26,538 and its total assets were £93,-259. In its 33 years of existence the association has paid £4,331,375 to suppliers, an average of £131,254 per annum, in addition to £28,784 in bonus. These figures show how important the dairying industry and the manufacture of butter and cheese is to the Warwick district.

Within a few miles, of the city are situated the Lyndhurst and Canning Downs studs, both of which have produced many famous racehorses. Lyndhurst also specialises in the breeding of Shorthorn cattle and Canning Downs in Herefords.

Recently the Netherby stud, which breeds Shorthorn cattle, extended its activities to producing Clydesdale horses.



Millhill



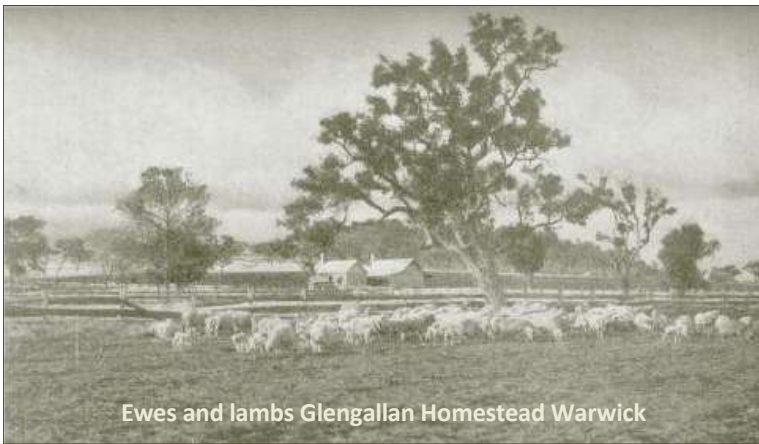
Looking at Warwick through a very old lens



Warwick Firemen 1899



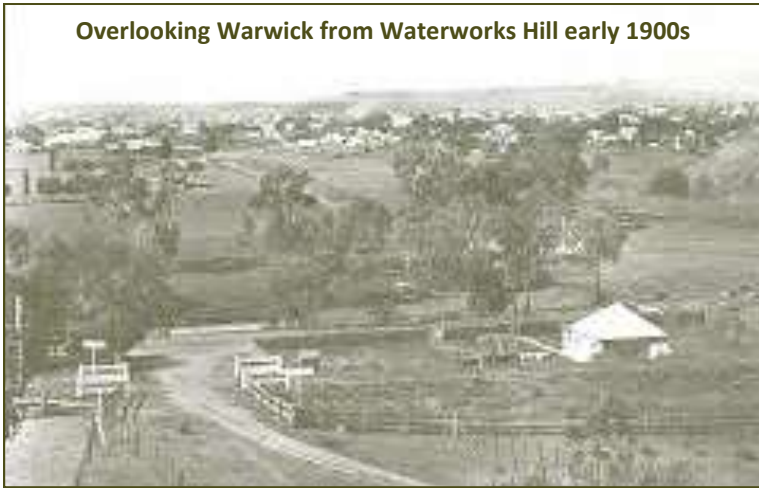
Warwick General Hospital 1913



Ewes and lambs Glengallan Homestead Warwick



Palmerin and Grafton Street Corner



Overlooking Warwick from Waterworks Hill early 1900s



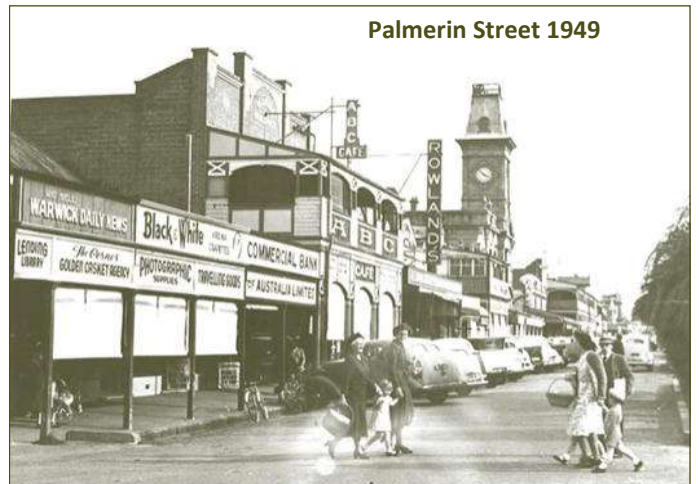
Palmerin and Grafton Street Opposite Corner



Warwick 1944-12-15: 2/12 General Hospital Troops on Parade at the General Salute

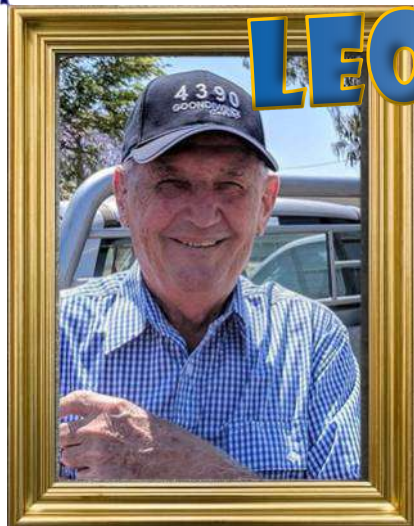


Warwick Hotel formerly known as Imperial Hotel



Palmerin Street 1949

LEON BILLING 1944-2025



Perhaps Leon's greatest achievement was the Leichhardt Garden Centre which he started from scratch out of the family garage with his wife, Jan.

L EON JOHN BILLING, also known as Boris, was born 8th April, 1944 and is remembered as a father, brother and devoted husband to his late wife, Jan. Leon was also a grandfather, a great-grandfather and a man who filled every room, every conversation and every day with love, energy and a good story.

He was many things, but above all, he was funny. He had a natural humour and a gift for storytelling. He could take the smallest moment and turn it into a story worth sharing — and even if you had heard it before, you were always happy to hear it again. He loved his family fiercely. His world revolved around his beautiful wife, Jan, and losing her about twelve months ago was incredibly hard for him.

While Leon kept moving forward, a part of him always remained with Jan who was the love of his life. It brings comfort to imagine them reunited once again. Jan, galvanised even further the importance of family around them. Their partnership and the life they built together were the foundation of everything Leon stood for.

One of the strongest bonds in his life was with his brother Eddie — or Chief, as they called each other. Sent away to Slade in 1950 at just seven and five years of age, they formed an unbreakable bond that lasted a lifetime. By the time he left Slade, Leon was a member of the First XV, First XI and the Slade Swimming and Athletics teams.

In Leon and Jan, in Eddie and Marie, there weren't three boys and one girl, or three girls and one boy — there were eight brothers and sisters. Eight people who have always had each other, sharing every part of life's journey. That in itself is a testament to both Chiefs.

Leon's working life took him from the

family property to Mackenzie Hardware, working with his father-in-law Merv, then on to the Wheat Board.

Later on, he entered a business partnership at Goondiwindi Grain Cleaners with Rodger Carrigan, and eventually worked in water resources across Queensland and New South Wales.

Along the way, he forged an even closer relationship with his nephew, Philip, with many stories told of Boris' lead-foot driving or wetting a line chasing cod on the way home.

But perhaps Leon's greatest achievement was Leichhardt Garden Centre, started from scratch with Jan out of the garage. From those humble beginnings, it grew into the flourishing business it is today, now proudly carried on by Greg and Helen — a lasting legacy of hard work, family, and love.

Leon was a devoted father to Cathy, Dan, Steve, and Greg. He always made time for his children, especially through the two phone calls a day that became part of everyday life.

Cathy has fond memories of Leon singing her to sleep, gently patting her head while softly singing "Moringtown Ride" and "All My Loving". Those quiet moments of love and comfort stayed with her forever.

One childhood memory that still makes the family laugh is that of Dan and Steve throwing wet sponges at each other in the bathroom with water everywhere. Leon stormed in, voice booming and ready to discipline — only to be met with a wet sponge to the side of the face. Without missing a beat, he turned back toward the kitchen calling out to Jan that he was done and she would have to deal with us.

A special memory with Greg took place on Good Friday in 2022. Greg and Leon decided to cook a large red emperor whole on the Weber — something neither had ever done before. Greg was nervous about

this and wanted it to be perfect. Following the recipe to the letter, with a few beers along the way, it turned out spot on — just in time to feed eleven unexpected but always welcome guests.

Bridgewater was Leon's happy place — his favourite spot. It held some of his most beautiful memories with Jan and countless fun times with family.

Whether it was Christmas, Easter, or simply an excuse to relax, Bridgewater brought everyone together.

A greatly treasured recent memory was a trip to the USA in September. During that time, Leon seemed to turn a corner, rediscovering happiness and enjoying life again after the loss of Jan.

Many will remember the dancing prowess of Leon and Jan. The legendary parties at Winton Street created nights filled with music, dancing, and laughter.

As a grandfather to James, Lucy, Hanna, Luka, Austin, Jordan, Mia, and Ada, and a great-grandfather to Charlie and Hazel, Leon felt enormous pride and joy. To James, Lucy, Hanna, Luka, Austin, Jordan, Mia, Ada, Charlie, and Hazel — each and every one of you gave Borrie so much joy and happiness.

Community involvement was something that was extremely important to Leon.

He served over twenty years with the Goondiwindi Fire Brigade. He also gave generously to junior rugby league and touch football.

All those who attended Leon's funeral 16th January were encouraged to share all their stories of him because he would want nothing more than laughter, a few beers, or a homemade rum raised in celebration of his wonderful life.

Leon John Billing leaves a legacy of love, laughter, family, and community service. He is missed deeply as a father, a mate, a hero to many and a school friend of ours.

Ω Ω Ω Ω Ω Ω Ω Ω Ω Ω Ω Ω Ω Ω

“
In 1960,
his final year at
Slade, Leon competed
in the First XV, First XI,
and the Swimming
and Athletics
teams.”

"When you are sorrowful look again in your heart, and you shall see that in truth you are weeping for that which has been your delight." Kahlil Gibran

Valé

**“Those we love don’t go away,
they walk beside us every day”** Alex MacLean

As we compile feedback from our readership following recent pleas for current information on people we have lost touch with, we include among our vale listings names who we now find have been deceased for some time. It will be immediately apparent by the dates who they are and unavoidably, some details are a little on the brief side.



Peter Robertson 1927-2017

ROBERTSON Peter Reginald F.R.C.S.*
deceased 25th August, 2017 aged 90 years.

Bereavement details:
Husband of Christina Isabel;
Father to Caroline, Clarissa, Andrew,
Rosie and their Families.

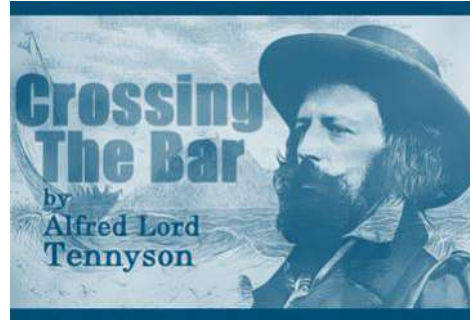
A Private Service was held for Peter who was at Slade 1941 to 1945

Valete from 1946 Magazine:

ROBERTSON P, R, - 1941-45. Junior 1942; Senior 1944 and 1945; Prefect; Colours in Tennis

*Fellowship of the Royal Colleges of Surgeons (FRCS) is a professional qualification to practise as a senior surgeon in the United Kingdom or Ireland.

"You cannot prevent the birds of sorrow from flying over your head, but you can prevent them from building nests in your hair." Old Chinese proverb



*Sunset and evening star,
And one clear call for me!
And may there be no moaning of the bar,
When I put out to sea,*

*But such a tide as moving seems asleep,
Too full for sound and foam,
When that which drew from out the boundless deep
Turns again home.*

*Twilight and evening bell,
And after that the dark!
And may there be no sadness of farewell,
When I embark;*

*For tho' from out our bourne of Time and Place
The flood may bear me far,
I hope to see my Pilot face to face
When I have crost the bar.*



“Be the things you loved most about the people who are gone.”

Rosemary

GONE BUT NOT FORGOTTEN

As always, we are deeply appreciative of information that you are able to contribute about any of our number we have lost. Please be sure to pass on anything that should be included in our Valé or Obituary notices.

Worthy of their Forebears



Members of the Slade Campus Past Students' Association are committed custodians of the history of Slade School and St Catharine's Church of England Girls School, and of the two schools which preceded the formation of St Catharine's Warwick, St Catharine's Church of England Girls High School, Stanthorpe and CEGS Warwick and the Warwick Christian College. Members of the Association may include past students and members of staff of Slade School or of St Catharine's Church of England School, or of the St Catharine's Church of England Girls High School Stanthorpe, or the Church of England Girls School, Warwick or Warwick Christian College and their descendants, past students of any other school, who have attended the campus and members of staff of any other school, who have attended the campus.



Last Word...

AS I PENNED OUR FRONT PAGE ARTICLE THIS TIME, I was sharply reminded of how very differently we access news in 2026. When many of us were growing up, not every household had a telephone or a radio. Those earliest telephones, now only seen in museums and other places of historical interest, in no way resembled the landlines we used even prior to 1960 or 1950. For many of us, rotary dialling was standard before today's key pad dialling became the norm. Radios, if you had them, incurred an annual licence fee (per set) and this revenue funded the ABC. Communication, as we probably recall from our school days, was primarily by written correspondence and was a lifeline and vital link for us with what was happening back home. This had the extra advantage of being able to read a letter over and over again which is what we might have done if we received one from a special someone!

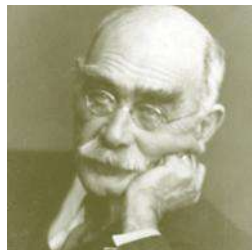
I have thought many times of the students who came to us at school from overseas and how far away they must have felt from home and all things familiar to them—especially since nearly all of them were only able to return home during our annual Christmas holidays.

It is difficult to fully grasp, in today's communication environment, how limiting and stressful it must have been awaiting news from various battle arenas in war-time Europe and the Pacific when families may well have had several of their immediate and not-so-close members fighting overseas. Not only were those at home worried about the wholly genuine possibility of loved ones never returning to their families when the war over, they were gravely concerned about the harsh conditions they were enduring, not to mention untold other unthinkable considerations.

In 2026, intelligent people accept that official news about overseas conflicts is, even now, very carefully curated and it has always been so. Governing bodies of all countries and political persuasions are invested in keeping their constituents, as far as is feasible, "on side" with, it must be said, varying degrees of success. The "fly in the ointment" for those releasing official news reports now is unrestrained access via social media to news and views that does not necessarily match the official line. With the virtually instant nature of social media and access to "news", not always constructive, positive or accurate, it is up to us to carefully research for ourselves information before we adopt a position on the subject at hand.

With the turmoil currently unfolding overseas, we again find ourselves in need of sifting cautiously through the deluge of information coming at us.

It seems apt, therefore to revisit the poem, "If" by Joseph Rudyard Kipling from his greater work: ('Brother Square-Toes'—Rewards and Fairies)



If

If you can keep your head when all about you
Are losing theirs and blaming it on you;
If you can trust yourself when all men doubt you,
But make allowance for their doubting too;
If you can wait and not be tired by waiting,
Or, being lied about, don't deal in lies,
Or, being hated, don't give way to hating,
And yet don't look too good, nor talk too wise;

If you can dream—and not make dreams your master;
If you can think—and not make thoughts your aim;
If you can meet with triumph and disaster
And treat those two impostors just the same;
If you can bear to hear the truth you've spoken
Twisted by knaves to make a trap for fools,
Or watch the things you gave your life to broken,
And stoop and build 'em up with worn out tools;

If you can make one heap of all your winnings
And risk it on one turn of pitch-and-toss,
And lose, and start again at your beginnings
And never breathe a word about your loss;
If you can force your heart and nerve and sinew
To serve your turn long after they are gone,
And so hold on when there is nothing in you
Except the Will which says to them: "Hold on";

If you can talk with crowds and keep your virtue,
Or walk with kings—nor lose the common touch;
If neither foes nor loving friends can hurt you;
If all men count with you, but none too much;
If you can fill the unforgiving minute
With sixty seconds' worth of distance run—
Yours is the Earth and everything that's in it,
And—which is more—you'll be a Man, my son!

Rudyard Kipling 1865 – 1936