



# ANOTHER WARMING WINTER ISSUE

# KINAWAH



VOLUME 2022

JULY AUGUST EDITION

## 2022 AGM at Club Glenvale a done deal

### IN THIS ISSUE

2022 AGM at Club Glenvale a done deal	1
WCC celebrates 15 years	1
Editor's Notes	2
2022/2023 Committee	3
SCPSA Annual Report	3
Brekky Creek Lunch	3
Happening now at 70 Horsman Road	4
In the spirit of long-gone fêtes and fundraisers	4
All the Good Oil from Grace	5
Cris & Nigel on the road for needy kids	6
Still to come in 2022	6
Brekky Creek Lunch	6
What you said: hearing back from our readers	7
Jest a Moment	7
Here there and everywhere:	8
• Massive Warwick Solar Farm in line with 2030 targets	
• Glover House new owners	
• St Mark's jumped and jazzed this year	
Warwick crafted, jazzed and all revved up again in 2022	9
St Mark's bell tower yarn-bombed with flowers	10
Nostalxix ~ the way we were: Tennis anyone? We look back through the decades	10-13
Kinawah AGM Report	14
Vale	15
Rhonda McKee	
John Henry Coleman	
Facebook Update	16



Clockwise from left: John Farquhar, Martin Taylor, Joan White, Lizzie Adams, Helen Moloney, Margaret Stewart, Nigel Faulkner, Cris Roy, Sharonn Challenor

**A**N ENTIRELY CORDIAL AND PRODUCTIVE AGM AT CLUB GLENVALE, saw the incoming committee, looking very much the same as the outgoing one! As such, it is keen to explore options for SCPSA that will be fit for purpose and to put them in place during the new financial year.

We welcome Martin Taylor as the new face on the team. He will take on the role of secretary and Lizzie will assume the position of liaison for past students of Slade and St Catharine's.

Martin, who was at Slade 1975-77 with John Farquhar, Nigel Faulkner and Cris Roy, comes to us with a wealth of practical experience in the business and hospitality sector and we look forward to working closely with him in the coming months. Also at Slade, at the same time as the above, was Sharonn Hood, now Challenor. Sharonn joined us for lunch and the AGM.

While the AGM was working through its agenda, Warwick's winter festival was getting off to a colourful and euphonic start. For more about this, turn to page 9. Warwick never looked quite like this when we were at school!

## WCC celebrates 15 yrs

**T**O COMMEMORATE ITS 15TH ANNIVERSARY, WCC commissioned local indigenous artist, Coedie Tandy (Warringal Arts CBT) to paint this stunning mural which symbolises the growth of the College and its students. The mural takes pride of place on Roberts House east end wall. We congratulate Warwick Christian College on 15 years.



SCPSA Inc  
www.scpsawarwick.com  
info@scpsa.com.au

Editor  
Joan (Clothier) White  
28 Teesdale Avenue  
Toowoomba QLD 4350  
0428 344 853  
kinawah.editor@gmail.com

John Farquhar President  
15 Quambone Street  
Worongary QLD 4213  
0401 917 811  
johnfarquhar6009@gmail.com

**IMPORTANT**  
Are the contact details we have for YOU current or about to change? Don't forget US when you change your address or email service provider.



**IS YOUR CLASS celebrating a MILESTONE in 2022, 2023 or 2024?**

**CAST YOUR NET WIDER FOR LOST CONTACTS AND ADVERTISE HERE OR, ALTERNATIVELY, FACEBOOK!**

## Editor's Notes...



**WE'RE NOW PAST THE HALFWAY MARK FOR** winter this year and I'm hoping all of us have weathered it OK— namely suffering a minimum of seasonal ills and chills, especially with Covid wreaking havoc among vulnerable populations.

This Kinawah has crept up a little abruptly due to the late release of the last issue. As noted on the front page, our AGM was conducted stress free overlooking lots of activity out on the hockey fields. The Glenvale hockey facility is an outstanding one, the envy of many other centres and, with the 2032 Olympic Games now just 10 years in the future for southern Queensland, it will be sure to get plenty of use.

Re the AGM, the Annual Report appears in the spot Johnno's Corner normally sits in and the Kinawah Report occupies Page 14.

Wednesday, July 27 saw several of our past students sharing Warwick Christian College celebrations to mark its 15 year presence in the Rose City. The campus is looking smartly shipshape as seen on pages 1 and 4. Clearly a lot of money has been spent to revive and update what was a rather time-worn facility when the college took it over thankfully "Saving Our Slade". When we visited, the Jumpers and Jazz in July festival was underway. Pages 8 to 10 do their best to convey a glimpse of the colour and atmosphere.

With deep concerns re the recent election-related violence in PNG, I have been in touch with the girls who joined us for our celebrations in 2018. Police and a contingent of Defence Force Officers were patrolling Port Moresby until the situation settled down. As many of our girls as possible have been working from home and sadly, we are not in contact with any of the Slade PNG boys. We also understand that the violence was mostly centred in some parts of the country which might reflect some possible deep seated frustrations and dissatisfaction in general. We understand that in the aftermath, clear vision will be needed for those elected to determine where and how PNG might best move forward. To this end our prayers have been requested. On a final note, there will be little surprise in the newsflash that our southern winters are not greatly missed by our PNG friends!

I conclude with these words from Flavia Weedn:

*"If one dream should fall and break into a thousand pieces, pick one of those pieces up and begin again."*

Until next time, enjoy the read Joan White



"If winter comes, can spring be far behind?"

**Percy Bysshe Shelley**  
**'Ode to the west wind'**

"How many lessons of faith and beauty we should lose, if there were no winter in our year!"

THOMAS WENTWORTH HIGGINSON



## 2022/2023 Committee

### EXECUTIVE

President	John Farquhar	0401 917 811
Vice President/Membership	Nigel Faulkner	0412 973 831
Secretary	Martin Taylor	0421 834 660
Treasurer	Cris Roy	0468 883 563

### EX OFFICIO MEMBERS

Archivist/Patron	Ted Ross	02 4885 2227
WCC Student Liaison	Grace Quach	0447 370 054
Slade CEGS Student Liaison	Lizzie Adams	0427 004 673
Kinawah/Contacts	Joan White	0428 344 853
Pastoral Coordinator	Rob Nolan	0439 784 457
Museum/Website	Leigh Nisbet	0418 156 296
Assistant Archivist	Helen Moloney	07 4635 0573
Area Reps	Ray Dickson	0419 702 657
	Paul Masson	07 4623 5307
	Peter Ramsay	07 3245 4706
	Irene Woods	07 4655 3078

johnfarquhar6009@gmail.com  
nigel.faulkner@hotmail.com  
mmbtaylor@hotmail.com  
crisroy1.@gmail.com

cro56704@bigpond.net.au  
thien.an.graceq@gmail.com  
lizzie0adams@gmail.com  
kinawah.editor@gmail.com  
rw.nolan@bigpond.com  
leenis@bigpond.com  
hmloney@aapt.net.au  
dicksonsare@gmail.com  
pbmasson@bigpond.com  
peterramsay47@gmail.com  
woodsfamily06@hotmail.com



## SCPSA Annual Report

In keeping with the eight objectives of the Association I believe that in 2021 / 2022 we have achieved those goals. That being :-

- a) To establish good fellowship among present and potential members of the Association.
- b) To promote and advance the interests of the Association in all its branches and activities in such a manner as the Association shall think fit following consultation with the Headmaster / Principal of Slade Campus.
- c) To assist in the education of students at the campus by such means and at such times as the Association shall determine following consultation with the Headmaster / Principal of Slade Campus.
- d) To be a custodian of the history of Slade School and St Catharine's Church of England Girl's School and of the two schools which preceded the formation of St Catharine's Warwick, St Catherine's Church of England Girl's High School, Stanthorpe and CEGS Warwick, and of Warwick Christian College which is currently operated from the campus.
- e) To provide a forum of care, companionship and support for needy members.
- f) To promote a sense of citizenship.
- g) To raise money for and devote such part of the funds of the Association as the Committee shall decide for the promotion of any object or project for the benefit of the Campus.
- h) To do all other such acts and things as may be necessary to carry out and give effect to all or any of the above objects.

### Things of note over the past 12 Months for our Association have been:-

- The identification of Able Seaman Thomas Welsby Clark as the unknown sailor.
- Breakfast Creek reunion.
- A visit to WCC and a talk to students about the SCPSA
- 2 x Bursaries to WCC.
- Welcomed Jason Gay as the new Headmaster to WCC.
- Cash donation to WCC.
- ANZAC Day memorial service at WCC.
- Charleville Catchup.

### I would like to thank the Committee for the time and effort that they have given.

**Nigel** for his counsel and experience as a long time serving member.

**Lizzie** for stepping in as Secretary and attending the WCC visits.

**Cris** for taking over the important role as Treasurer.

**Joan's** continued 'above and beyond' effort with the Kinawah. I believe the Kinawah is the glue and backbone of our Association and each edition is eagerly awaited by many.

**Leigh Nisbet** continues to do a fantastic job with the Museum and website.

**Ted Ross** our Archivist is a constant source of knowledge and assistance to Joan.

**Grace Quach** as WCC Student Liaison and past student of WCC.

**Rob Nolan** as Pastoral Coordinator.

**Helen Moloney** as Assistant Archivist and 'awards attendee'.

The area reps- **Ray Dickson, Paul Masson, Peter Ramsay** and **Irene Wood**.

**Kathy (Inman) Fabila** has done a wonderful job with establishing and overseeing the Slade – St Cath's Facebook page. I lamented my frustration in the last Kinawah about the lack of engagement with the 80's and 90's past students and then realized that the answer is already there, we just have to use it more effectively. More on this over the next 12 months.

This year has been Jason Gay's first as the WCC Headmaster. Jason has a great understanding of rural communities having had a four year stint in Emerald before relocating to Warwick. We are fortunate that Jason is passionate about the history of Slade and its part in the history of education in Warwick. Jason has welcomed our Association's continued presence and use of the Museum at the College. We can only look forward to a continued strong relationship with the College. As your President I will continue to seek ways to promote the Association and encourage fellowship within the various peer groups. I thank you for your attendance and I move that this President's Report of 2022 be accepted.

**And as per what has become my customary footnote, remember to get in touch with your old school mates—don't wait for them to pick up the phone. You do it, it may just make their day.**

**John Farquhar**



### One very fine and crisp winter's evening in July...

Dear SCPSA,

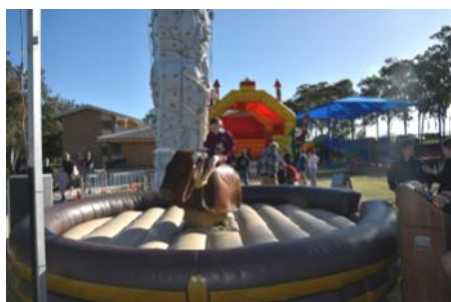
Last Wednesday we had the amazing opportunity to celebrate 15 years of Warwick Christian College. Thank you to all who braved the cold to celebrate with us. It was a fantastic night of fun, food, and reflection on what God has done these past 15 years.

Warwick Christian College was the dream of founding Board Chair, David Brailey. He worked tirelessly in those early days, joined by Owen Bonney and others, to establish an affordable Christian school for the families of the Southern Downs.

On the 29<sup>th</sup> of January 2007, Warwick Christian College welcomed its first 7 students. Since then, the College has changed location, added staff, started an SAS school for disengaged students, and has grown to just under 200 students from Prep to Grade 12. Along the way we were able to fulfill another dream, the dream to save the Slade Campus.

Today the College is a key part of the Warwick landscape. With excellent facilities, dedicated staff, and where every student is known by name, valued and inspired, and challenged to succeed. The dream of David Brailey has come to fruition. Last Wednesday night we honoured the pioneering men and women who made this dream possible, and we closed the foundational chapter of our journey. We are excited to continue our partnership with you, the Slade Campus Past Students Association, to write the next chapter of the Warwick Christian College story. We thank God for his many blessings in the life of the College, and we look forward to what He has in store for us next.

God Bless,  
Jason Gay  
Principal



### In the spirit of long-gone fêtes and fundraisers

**A** GROUP OF SCPSA MEMBERS WAS WARMLY WELCOMED TO WARWICK CHRISTIAN COLLEGE as invited guests for the above celebrations prompting a few thoughts to meander back to yesteryear and the Slade Fête. Wandering round the current day campus and noting all the brand new playground equipment and use of so many other technical innovations, the contrasts between the present day facility and what we knew in days of old could not be more apparent. Clearly, with extensive turfing, other landscaping and refurbishment of buildings to house more fit-for-purpose classrooms, there has been a huge effort made for the grounds to be looking their best.

To return to the Slade Fête, for those of us old enough to remember back to when St Catharine's and Slade were two quite separate campuses, visiting the fête was most definitely one of the highlights of our time at school. Contact between both schools was extremely limited and so this was a very out-of-the-ordinary circumstance indeed.

After the loss of so many of our brightest and best in World War II, Slade School past students wasted no time in their push to raise funds to build the Old Boys War Memorial building. One way students and staff at the school could contribute to this became the established tradition of the fête held one Saturday afternoon during the spring term. The gist of a letter which featured in the 1947 school magazine will kick start the memory banks for some of us. On this occasion the fête raised £250—not an insignificant sum for that time. Some highlights included the following:

Parents sending in gifts for stalls with the new school truck used to cart anything that was needed, the boys setting up coconut shies, skittles, hoop-la, the slippery pole, goal-throwing post, fishing pond and nail-driving competition (the winner being the one who drove the nail with the fewest number of strokes through a 4 inch plank of wood).

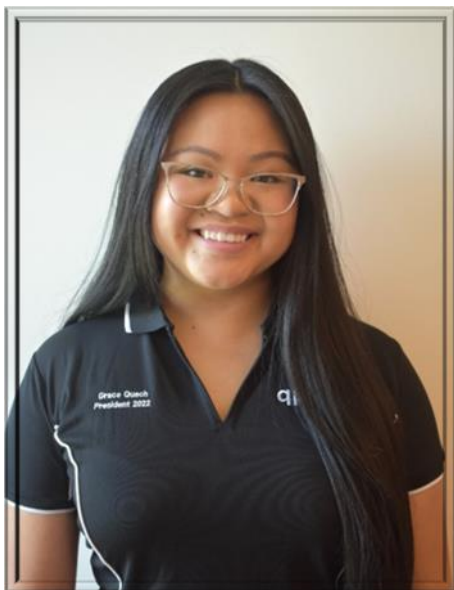
Stands to sell pies, cakes, hot dogs, ice-cream and drinks did a roaring trade.

There was dancing in the gym, a Musicale and Quiz spectacular, a Burlesque Mannequin Parade which became a popular recurring feature in subsequent years and an auction sale.

Other attractions introduced in later years included a mini rifle range down in the rocks area manned by the cadets with modified .303 calibre rifles, a flying fox which Eddie Prince and his scout troop constructed and staffed, hay rides, mini golf, throw-the-penny and model trains. Our records seem to indicate the last Slade Fête was held in 1967.

# All the Good Oil from Grace

**H**ello everyone! A lot has happened over the last couple of months, so I hope you are all ready for my bi-annual update! I am now in my final year of my undergraduate degree and have been very busy completing my honour project and my last few university subjects.



Last semester was a whole new learning curve for me. The aim of our fourth year is essentially to apply all our learned knowledge from the past three years. Each week we were presented with several clinical cases with different medications, ethical/legal issues and medication-related-problems, and we basically were required to write reports on how to solve/fix them. Prior to this year we had only really looked at diseases and medications individually, but this semester the cases we were provided with were complex with multiple drugs and conditions combined, so it did require a different style of thinking. While it was a challenging semester, it was also very rewarding to put the pieces together and to understand new concepts, terminology and take on a new way of thinking. We also had our first Business in Pharmacy subject which I found quite interesting! My honours project has consisted of many drafts, surveys and ethics applications. I'm currently in my data collection phase and will begin writing my thesis in the next few weeks!

As some of you may know, last year I was elected as the President of the Queensland Pharmacy Students' Association (QPSA).

Preparation for orientation week commenced in late 2021, where the executives and I devoted countless hours networking with suppliers, putting together market day, orientation bags, and working with the Student Experience Committee to design a new format for our First Years Orientation Day. It was a week filled with hysterical laughter, physical pain, meltdowns, and family-bonding Nando dinners that I'll never forget.

QPSA's Merchandise Representative, had a busy semester organising placement shirts, AMH orders and our yearly hoodies/sweatshirt. This year QPSA also unveiled a brand-new crest, what was used on all our new winter merchandise.

The QPSA also had a very busy semester planning some fantastic social events. Kicking off the semester with our "Happier than ever At Coachella" Launch Party. Then our Annual Scrub Crawl, which attracted over 900 attendees. The girls have now focused their atten-



tion to prepare for our Annual UQ Pharmacy Ball, Semester Two Launch Party, and the next Pub Crawl!

In addition to our social events, we also hosted several educational events including OTC Night, Resume and Interview Night, Research Night, and Star Pharmacy Intern Night. We are also excited to announce that Star Pharmacy is now one of QPSA's event sponsors.

This year saw the re-introduction of NAPSA's annual Charity Cup. All pharmacy schools across Australia competed for the most money and awareness raised for a chosen organisation. This year, across the 17 branches we raised a total of \$10,620 for Myeloma Australia! We also saw the come-back of Industry Awareness Day, where several pharmacy groups and companies came together to form a mini trade show. It was a huge achievement, and it was wonderful to see so many students engaged in networking with our industry professionals.

Every year the Pharmacy Guild of Australia hosts the Australian Pharmacy Profession (APP) Conference. This year over 70 UQ students attended APP. The executives also had the opportunity to attend the NAPSA Alumni Night where we were able to



network with several NAPSA Alumni and industry professionals. We also got to catch up with some of our sponsors, and personally thank some of the companies who donated to our organization. On the 8th of March, I attended the Guild's Annual International Women's Day Breakfast where her Excellency the Honourable Dr Jeannette Young PSM, Governor of Queensland presented a wonderful speech.

Being a part of QPSA has been one of the most rewarding experiences of my degree.

Not only have I had the opportunity to connect with staff, students, industry professionals and pharmacists, but it has contributed my own personal growth, my communication skills and confidence.

Thanks to all my new contacts and connections, I have been able to secure an internship over in Bribie Island through Star Pharmacy Group (SPG) for next year. Additionally, I am now SPG's Student Ambassador and Outreach Coordinator, which allows me to liaise with all the different universities nation-wide and provide pharmacy students with education/revision tools and support.

I hope everyone is staying warm this winter! I am sending my best wishes to everyone for the AGM to run smoothly. Fingers crossed I will get to meet some of you soon. Grace.



*As a footnote, it would be great to hear back from others of our membership who are past Warwick Christian College students: how you are doing and where you are now.*

# Cris & Nigel on the road for needy kids



**BASH**

**29 August – 7 September 2022**  
**Winton to Yeppoon via Birdsville**

In 2022 Cris Roy and Nigel Faulkner have again taken the plunge and this time are each entering a vehicle in this outback initiative to raise funds for Variety. The Variety Bash is not a race or a rally. It's an adventure with mates driving 30-year-old plus cars through regional parts of Australia that they might otherwise not get to see and experience, all with the goal of helping to give Aussie kids a fair go.

Each car commits to raising \$8,500 to help kids in need but on average raises closer to \$15,000 because of the support that is provided. The thing making this Bash special is that teams will get to meet some of the kids that participants have directly assisted as they make their way through country that many of our past students will know very well.



Nigel and Cris are seen here on the track on the last Bash that they undertook pre Covid.

Variety is expressly dedicated to empowering kids who are sick, disadvantaged or who have a disability. It allows them to gain mobility, freedom, get about more freely in the community and to achieve independence with improved self esteem.

If you would like to support Nigel and/or Cris, go online to <https://varietybashqld.com.au/donate> and find the *search for individuals and teams* window.

Just type in their names to see how they're progressing towards their goal. The facility is there to make a donation which would be very much appreciated. Best of luck guys!

**DOMAIN NAME NOW**  
 for our revitalised website:  
[www.scpsawarwick.com](http://www.scpsawarwick.com)  
 STILL TO COME IN 2022

**August 18**  
 Vietnam Veterans Day

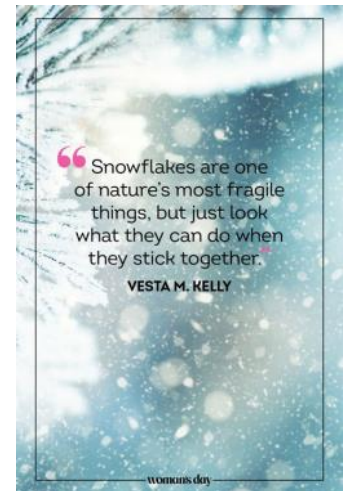
**September 23**  
 Spring Equinox

**November 5**  
 Brecky Creek Lunch

**November 11**  
 Remembrance Day

**November 16**  
 WCC Primary Awards Evening

**November 17**  
 WCC Secondary Awards Evening



## Breakfast Creek Reunion

2022 ANNUAL GET-TOGETHER  
 Slade/St Catharine's/WCC Past Students  
 2 Kingsford Smith Drive - Breakfast Creek. 4020

- There will be an area set aside for us at the front.
- Buy your own drinks and meals
- Partners etc. are more than welcome
- No speeches or formal proceedings
- Catch up with old classmates in a relaxed atmosphere

**2022  
 DATE**

**Saturday, November 5**  
 11.00 AM FOR LUNCH

**TO FIND OUT MORE, CONTACT**  
 Richard Cleal: 0447 447 236  
[rcleal@bigpond.net.au](mailto:rcleal@bigpond.net.au)

**CAFÉ • JUICES • CIDER**

**SUTTON'S**

Juice Factory & Cidery

[www.suttonsfarm.com.au](http://www.suttonsfarm.com.au)

Varietal Apple Juice • Preserves

Apple Cider • Apple Brandy

Apple Cider Vinegar • Apple Syrup

Open 7 Days

9.30am - 4.30pm

**07 4685 2464**

10 Halloran Drive

Thullimbah


adj. New England Highway


Ref. J6

**CAFÉ OPEN EVERY DAY**

# What you said: hearing back from our readers

It is good to hear back from some of the considerable number of us who have made their homes overseas and to take in some other perspectives. My own daughter and her family live in Cambridgeshire in the UK and we often compare notes on maximum temperatures and climate differences. This year, following several mild winters we have been treated to one of those 'proper' Southern Downs winters that we recall from our school days. Britain and Europe, on the other hand, have been sweltering in record heat wave conditions and the western United States is suffering protracted severe drought. The email below from Eric Graham in the Lone Star State reminds us of this. It also gives us some idea of the power that Kinawah holds to help keep us all in touch and renew old acquaintances, reminding us that it is never too late to get back in touch when the opportunity presents itself.

 **David Carstens 1949-52** Special Thanks for the coverage of Judith Cutmore. It is a most suitable expression of Judy's association with Slade/St Caths. You had some good information from persons who knew her well, starting I recognise, with the Ted Ross Database; but I am intrigued with the accuracy of the "Brickies Labourer" task. It is legend but true. You chose the photo of Judy which I would have recommended.

 **Eric Graham 1956-60** Hi Joan, glad to hear you guys are cold over there. I am in Dallas, Texas and burning up. There was a comment in the last Kinawah by Ian Jones, Slade 1956 – 1959. He and I were in the same year in Slade and I wonder if you would pass on my email to Ian and ask him if he wants to touch base. We have not talked for over sixty years.



## *And now, to jest for just a moment*

- ✂ **Bet nobody's laughin at those Amish people now...clickety clackin right past those petrol stations...**
- ✂ **A man in Sydney walked into the produce section of his local supermarket and asked to buy half a head of lettuce. The boy working in the produce department told him that they only sold whole heads of lettuce. The man was insistent that the boy ask the manager about the matter. Walking into the back room, the boy said to the manager, "Some old bastard outside wants to buy half a head of lettuce". As he finished his sentence, he turned around to find that the man had followed and was standing right behind him, so the boy quickly added, "and this gentleman kindly offered to buy the other half". The manager approved the deal and the man went on his way.**
- ✂ **What do hospital gowns and insurance have in common? You think you're covered, but you're not.**
- ✂ **A student was heading home after being abroad for some time. When she got to the airline counter, she presented her ticket to New York. As she gave the agent her luggage, she made the remark, "I'd like you to send my green suitcase to Hawaii, and my red suitcase to London." The confused agent said, "I'm sorry, we can't do that." "Really? I am so relieved to hear you say that because that's exactly what you did to my luggage last year!"**
- ✂ **So it's Saturday evening and David said to his wife Jan: "Let's go out to eat tonight." Jan came back with the classic, "I have nothing to wear." reply. So David said to her: "Just wear what you had on the last time we went out darling, you looked beautiful!" So there they were in their local Chinese restaurant, David in jeans and a T shirt, and Jan in her wedding dress!**




*Live every moment  
Love beyond words  
Laugh every day*

**JACANDA ALPACA FARM STAY** 86 Mount Norman Road, Wallangarra 4383 ☎ 0409 194 520

Stunning views of Girraween National Park  Close to historic Tenterfield  Handy to Granite Belt wineries and other attractions





*email: fred@jacandaalpacas.com or visit Jacanda Alpaca Farmstay online to check amenities, availability, and guest reviews...*

# HERE THERE AND EVERYWHERE



## Massive Warwick Solar Farm in line with 2030 targets



The May June Kinawah mentioned the new wind farm at Karara, set for completion in 2024 and the largest of its type in the southern hemisphere. Now another massive renewable energy farm, close to our old stomping ground has come on line. With more than 200,000 panels, the Warwick Solar Farm is a 64 MWac renewable energy facility just north of the city and easily visible at the eastern side of the highway. The project was developed by Terrain Solar and was acquired by the University of Queensland in 2018 enabling them to become the first major university in the world to offset 100% of their electricity consumption with renewable power produced from their own assets. UQ is also using the project as a research and teaching facility. Construction began in February 2019 and the farm was formally opened in July 2020. It is utilising low impact solar photovoltaic technology to generate about 154,000 MWh of clean energy per year, reducing emissions in the electricity sector by approximately 125,000 tonnes of CO2e annually.

In 2019 the project won a coveted Australasian Green Gown Award for its commitment to sustainability in the inaugural 2030 Climate Action category.



Palmerin St residence in Warwick, QldPics taken in 1932:

**Sharon Hubbard** posted in **Lost Faces of Warwick** 02/08/2022:

We bought 189 Palmerin Street, Warwick in December last year. Known by many names including Glover House. I'm aware it was part of St Cath's boarding school.

Unfortunately, the previous owner had let the house and gardens go due to his health so we are slowly trying to bring her back to life.

I would love to hear stories of anyone who went to St Cath's during this time. The house was built in 1918 by P.J Barnes.

**Linda Cross:** We lived over the back fence at 52 Acacia Avenue when I was growing up. I have many happy memories of this house when it was owned by John Mac-Namara (the dentist) before it was sold to St Cath's.

**Joanne Frizzell:** What a treasure! Will be lovely when restored



Oh-so-familiar, St Mark's not quite as we remember it all decked out for this year's winter celebrations

# Warwick crafted, jazzed and revved up again in 2022



## Jumpers & Jazz in July

**Jumpers and Jazz in July** has chalked up yet another successful celebration in Warwick in 2022. Billed as “Queensland’s quirkiest yarn-bombing and jazz winter” festival, it was created in 2004 as a positive community response to a major CBD streetscaping project in the Rose City by the local council. This was to promote participation in the arts, generate creativity, increase community participation and showcase textile art and the region to locals and visitors alike. **J&J** occurs annually and is traditionally held over 10 days at the end of July. As such it is a platform for the arts and a celebration of all that is wonderful about winter. Visitors embrace the chill, are inspired by vibrant music and art and come to see around 90 trees dressed in art by textile artists from all over Australia and overseas. Add in a program of workshops, exhibitions, pop up art and craft shops, street festivals, a giant bonfire night, static car displays, dining events, country style breakfasts, swing dance, live jazz and you have recipe for a festival abundant with colour, creativity and excitement as part of a unique country town experience.



# St Mark's bell tower yarn-bombed with flowers



In a wonderful demonstration of ingenuity and collaborative effort, “an 18-metre high ‘flower tower’ has been hung from the St Mark’s, Warwick bell tower by the rural fire brigade, backed by nearly 100 supporters from Northhampton Shire in England to Queensland’s Innisfail” says Warwick community member Janelle Mangan

**S**T MARK'S, VOLUNTEERS AND WOMEN'S GUILD MEMBERS with local fire brigade officers are seen here at the foot of the flower tower in July 2022, with Women's Guild member and flower tower organiser Elaine Stewart (front row, centre) and Church Warden Sharon Johnson (front row, right)



The flower tower idea originated from St Margaret of Antioch Church in Barley, England, which was created to raise funds for renovations and upkeep. \* It grew from a shared activity between regional Anglican parishes to a widespread collaborative effort that saw teenagers through to nonagenarians knitting together, including from community and church groups, schools and aged care organisations.

The abundance of colour is the hallmark of the urban Warwick artwork, with its beauty the result of diverse genders, religions, cultures and cross-generations contributing their crafts. The local fire brigade assisted with the carefully planned hanging of more than 2,200 knitted, crocheted and material flowers and leaves, which proved to be a logistical exercise and small engineering feat.

Warwick residents and visitors were invited to view the flower tower day and night, during the festival with onlookers encouraged to get up close to see the level of detail in the flowers, with some pieces featuring beetles, butterflies and buttons. Two large crosses have been incorporated on each side of the artwork as symbols of faith and community outreach.

<https://anglicanfocus.org.au>

The lovingly crafted and colourful flower tower is an initiative of the St Mark's Women's Guild as part of the 2022 Jumpers and Jazz in July festival.

St Mark's Women's Guild member Elaine Stewart said the 12-month project exceeded all expectations, bringing so many people together with a shared purpose.

“The pride in the resulting masterpiece is immense, but so much more is the collaborative spirit that went into its making,” she said.

“It gave so many something to focus on and a sense of achievement, particularly during COVID times when many were isolated and alone at home.

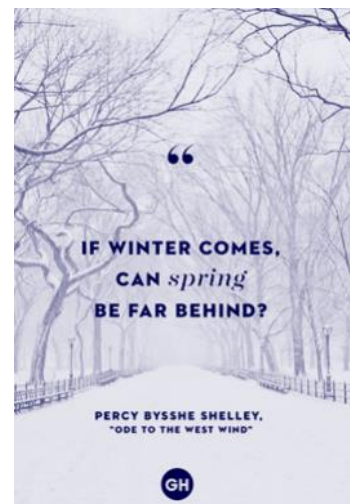
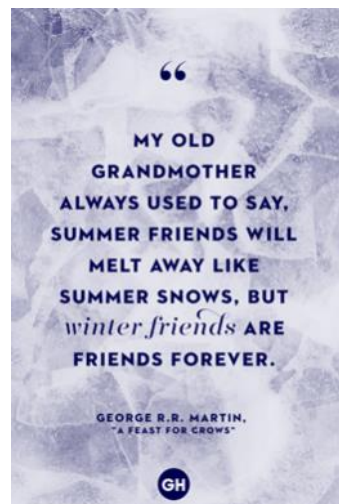
“We thank all those who contributed through donation of materials, labour and craft and remember two of our members who were so proud of their involvement; however, unfortunately, aren't with us today to see the finished product.

“The piece reflects so many people's stories, with one Toowoomba lady making 90 flowers in memory of her late father who was a former St Mark's parishioner who passed away at 89 years of age.”



St Mark's, Warwick community members waiting for the flower tower to be hoisted and hung on the bell tower in July 2022, including St Mark's, Warwick rector The Ven. Lizzie Gaitskell and President of the St Mark's Women's Guild Winsome Anderson

\*In the past two years SCPSA has contributed to the fund to assist with some much needed repairs and restorations to the stained glass windows which we all clearly remember so vividly from the many hours we attended services at St Mark's during our school years.

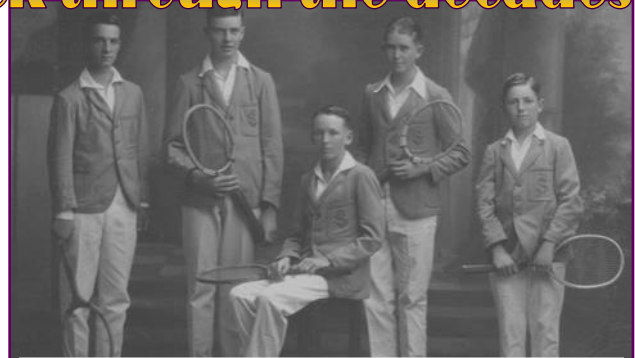


Nostalgix ~ the way we were ~ Nostalgix

# Tennis anyone? We look back through the decades



1948 Margaret Welsh, Patsy Lane, Diana Bell, Heather Donovan



1928 Stuart Montserrat Stephenson, Vardon Bunning, Richard Jones, Phillip Elphinstone, Arthur Smith



1951 Left to Right Peggy Johnston, Judith Schwennesen, Natalie Budge, Margaret Tosh



1941 Winners of the Daily News Cup: Robin Becker, Wallace Mitchell, Robert Kille, Geoffrey Todd



1956 Marlene Young, Anne Armbruster, Patricia Haggard, Eleanor Gray



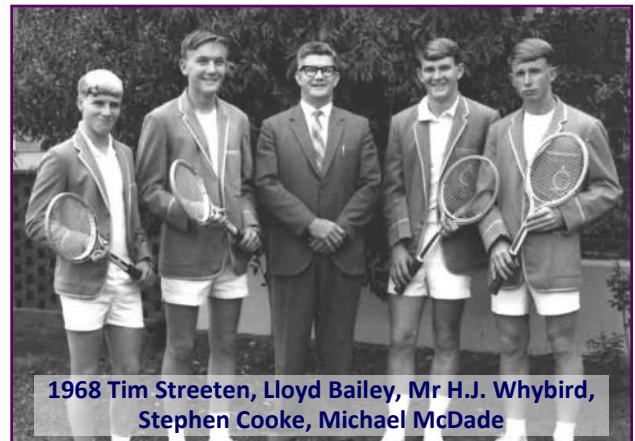
1953 Kevin Donovan, Royce McCowen, Mr K. Dan, Kenneth Hassall. Absent Peter Ferris



1966 Joan Eastwell, Tempe Hornibrook, Sharlane Charles, Helen Robb



1969 Pam Hardie, Karen Gordon, Kerrie Humbley, Ruth Greenup, Susan Feez, Desley Sutton, Julie Hornibrook



1968 Tim Streeten, Lloyd Bailey, Mr H.J. Whybird, Stephen Cooke, Michael McDade

*Nostalgia is a file that removes the rough edges from the good old days*

# Further information, plus - did you know...

From previous page in photo order

## WHERE ARE THEY NOW?

• Margaret Welsh (Finlay) 1946-48	<b>NOT KNOWN</b>
• Patsy Lane 1948-48	<b>NOT KNOWN</b>
• Diana Bell (Hoog) 1947-48	<b>NOT KNOWN</b>
Heather Donovan (Schnitzerling) 1945-49	<b>dec'd 2021</b>
• Peggy Johnston	<b>NOT KNOWN</b>
Judith Schwennesen (Fawcett) 1943-54	<b>current member</b>
Natalie Budge (Ferris) 1950-52	<b>in current contact</b>
• Margaret Tosh (1950-52)	<b>NOT KNOWN</b>
• Marlene Young (1951-56)	<b>NOT KNOWN</b>
Ann Armbruster (Clarke) 1948-57	<b>current member</b>
• Patricia Haggard 1951-56	<b>NOT KNOWN</b>
Eleanor Gray	<b>dec'd</b>
• Joan Eastwell (Bradford) 1964-66	<b>NOT KNOWN</b>
• Tempe Hornibrook 1964-66	<b>NOT KNOWN</b>
Sharlane Charles (Elfverson) 1966-67	<b>in current contact</b>
Helen Robb (Moloney) 1962-67	<b>current member</b>
• Pam Hardie came to St Catharine's 1969	<b>NOT KNOWN</b>
• ? Gordon	
Kerrie Humbley (Purvis) 1967-78	<b>in current contact</b>
• Ruth Greenup 1967-71	<b>NOT KNOWN</b>
Susan Feez 1968-69	<b>in current contact</b>
• Desley Sutton 1967-69	<b>NOT KNOWN</b>
Julie Hornibrook 1966-69	<b>current member</b>
Stuart Montserrat Stephenson 1926-30	<b>dec'd</b>
Vardon Bunning 1927-29	<b>dec'd 1986</b>
Richard Jones 1927-29	<b>dec'd 1934</b>
Phillip Elphinstone 1927-28	<b>dec'd</b>
Arthur Smith 1927-29	<b>dec'd</b>
• Robin Becker 1938-41	<b>NOT KNOWN</b>
• Wallace Mitchell 1939-43	<b>NOT KNOWN</b>
Robert Kille 1940-41	<b>dec'd</b>
• Geoffrey Todd 1937-41	<b>NOT KNOWN</b>
Kevin Donovan 1949-54	<b>in current contact</b>
Royce McCowen 1945-53	<b>dec'd 2009</b>
Kenneth Hassall 1949-54	<b>in current contact</b>
Tim Streeten 1966-67	<b>current member</b>
Lloyd Bailey 1963-68	<b>current member</b>
Stephen Cooke 1964-68	<b>current member</b>
Michael McDade 1962-68	<b>current member</b>



K I N A W A H

## In countdown order, 10 surprising tennis facts

### 10. Tennis originated in France and is based on a game called 'Jeu de paume'

Long before the emergence of lawn tennis, a game called 'Jeu de paume' (game of the palm) was played in 12th century France, which is believed to be the forerunner of the sport as it exists today. The game was similar to modern-day tennis, but the players used their bare hands to play instead of racquets.

### 9. The world's oldest tennis court is still in use today

The Royal Tennis Court located at Hampton Court Palace, London is the world's oldest tennis court and it is still in use. Built between 1526 and 1529, it was Henry VIII's preferred venue to indulge his love of tennis. Legend has it that he was given the news of Queen Anne Boleyn's execution while he was playing tennis on the court. The game played on this court is slightly different from modern tennis, however - the sport is called 'real tennis' and is played indoors.

### 8. The scoring system is based on the clock face

The origins of the 15, 30, 40 scoring system are lost in the records of time, but the explanation most commonly given is that they were based on a clock face at one end of the court. The first point was the first quarter mark that the minute hand struck on the clock, i.e., 15, and the second point was the second quarter mark struck. Because 45 took too long to say, the third point was shortened to 40.

### 7. Jimmy Connors has won the US Open on three different surfaces

Legendary tennis player Jimmy Connors holds the honour of being the only tennis player to have won the prestigious US Open on three different surfaces - grass at Forest Hills in 1974, clay at Forest Hills in 1976, and hard court in 1978 at Flushing Meadows.

### 6. A Grand Slam final once finished in 34 minutes!

That's how dominant Steffi Graf was in her prime. In the 1988 French Open final, Graf demolished Natasha Zvereva 6-0, 6-0 in a completely one-sided match that took all of 34 minutes to complete! That is some beat-down.

### 5. A 13-year-old has competed at Wimbledon

In 1907, Austrian tennis player Mita Klima became the youngest player to have ever played at Wimbledon. She was 13 years old when she participated in the prestigious tournament. Unfortunately, she lost in the first round.

### 4. The tennis ball only stays in play for 20 minutes in a standard match

As most of us have seen, a proper competitive tennis match lasts for about 2 hours on an average, or even more. But did you know that the tennis ball remains in action (i.e., in a state of movement) for only about 20 minutes in a standard 2.5 hours match? The pros certainly spend a lot of time taking breaks in the middle of a match!

### 3. Yellow tennis balls were used for the first time in 1986

Yellow tennis balls were introduced in 1972 by Mike Davies keeping in mind that they were more visible on (colour) television. Those tennis balls were used in Wimbledon for the first time in 1986. Before that, the balls used were usually white in colour.

### 2. Tennis was originally played on an hour-glass shaped court

Originally, lawn tennis was played on an hour-glass shaped court with a net that was 4ft 8in high. A modern day net measures 3.5ft at the posts and 3ft in the middle.

Rectangular courts were introduced in 1875 by the All England Croquet Club at Wimbledon when it decided to add tennis to its repertoire.

### 1. Maria Sharapova's grunt is louder than an aircraft

Maria Sharapova's on-court grunt or shriek has been officially recorded at a volume as high as 101 decibels. That is louder than a motorcycle, a lawnmower and a small aircraft landing. It is also about the same volume as an ambulance siren, and only five decibels quieter than a lions roar. And guess what, Sharapova is not even the loudest player! Michelle Larcher de Brito's grunt has been recorded at 109 decibels. Imagine how courageous their opponents must be to face that kind of noise!

<https://www.sportskeeda.com>

# More sporting teams and some high octane action



**1944**  
 Gloria Donovan *dec'd*  
 Maureen Griffith *UK*  
 Fay Sheridan *dec'd*  
 centre front with  
*Lalagull Cup*  
 Betty Thomson  
*current member*



**1934**  
*Back*  
 Harold Wearing  
*dec'd*  
 Robert Wearing  
*UK*  
 Basil Hindmarsh  
*dec'd*  
*Front*  
 Edward Pollard  
*dec'd*  
 Jack Richardson  
*dec'd*



**1947**  
 Marion Becker  
 (Irwin - *UK*)  
 Helen Naylor  
 (Darlington - *dec'd*)  
 Margaret Welsh  
 (Finlay - *UK*)  
 Doreen Foot  
 (Sullivan - *UK*)



**1949**  
 Hazel Wickham  
 (Wood) leading – *in*  
*current contact*  
*no other IDs yet.*



**1961**  
 Roslyn Acworth, *UK*  
 Jenny Donovan -  
*current member*



**1948**  
 August Sue See *current contact*, Peter Barnes *UK*,  
 John Bird *UK*, Brian Self *dec'd*, John Austin *dec'd*,  
 Lionel Hyam *dec'd* - *photo supplied by Joan Austin*



**1969**  
 Front: *Unidentified*, Helen Frizzell, Kay Whybird,  
 Pam Dight, Julie Stower, *Unidentified*  
 Behind: Marie Bailey, Karen Bromley, Barbara  
 Whybird, Helen Smith, Karen Hutton *UK*



*UK on this page*  
*indicates current*  
*whereabouts/*  
*status unknown.*  
 We have no firm  
 contact details  
 for the members  
 of this team.

**1977**  
*Back:*  
 Scott White,  
 Frank Gorrige,  
 Robert Gorrige  
*2nd Row:*  
 Barry Cedric,  
 Lloyd Smith,  
 Mark Gadsby,  
 Martin Millard,  
 Troy Turnbull,  
*Front Row:*  
 Geoffrey Fielding,  
 Rodney Kent,  
 Ian Bell,  
 Craig Farquhar,  
 Robert Smith



Reo Anui *UK*  
 Slade 1955-58



Year and identities  
 not known



# Kinawah Report 2022

## # The end of another fiscal year sees us still navigating our way through extraordinary times!

The last 2½ years have served to show us just how effectively unforeseen contingencies can radically change lives and circumstances for everyone. I am, of course, talking about the pandemic. Two years ago just a handful of months from its onset, gatherings and travel were severely restricted and the development of vaccines was still future; now there has been the advent of several variants to further muddy the waters. It has all been a steep learning curve and while we may not yet know for certain their long term effectiveness, after a lot of stops and starts, vaccinations and boosters have become readily available to those who want them. Health advice has been confusing at times but preparing for the worst and hoping for the best works for me as a useful strategy.

## #keeping in contact!

With all of this in mind I consider Kinawah to be an excellent vehicle to boost morale and keep everyone informed and in touch. Just this week I heard back from Eric Graham who was at Slade 1956-60. Eric lives in Dallas, Texas, and asked to be put in touch with Ian Jones whose comment he saw in the May June Kinawah re the loss of 1959 school captain, John Davies in the Voyager disaster in 1964. The two have not been in contact for all of the 60 years since leaving school! You’ve simply got to appreciate the immediacy of emails—when all is working as it should! As mentioned in the most recent Kinawah, I have been having problems with successful delivery of emails to those of us who use bigpond as their internet service provider. Keeping electronic and residential addresses current is an ongoing and sometimes problematic task but we can only try our best. The regular articles that our WCC Student Liaison, Grace, and WCC Principal, Jason Gay, have supplied have continued to keep us up to date with happenings on the campus that we hold in common. Ted Ross, our Patron and Archivist, continues to work away behind the scenes with the aim of passing on records that are as complete as possible and our Pastoral Co-ordinator, Rob Nolan, always comes good with appropriate words of encouragement when asked to do so. Johnno’s Corner too, manages to hit the nail on the head when this is needed. My sincere thanks to all these committee members as we work towards next year.

## #Sponsorship!

Again, I make mention of our two, now long-term, sponsors, Fred Alley, Jacanda Alpaca and David Sutton, Sutton’s Juice Factory and Cidery. We welcome their continued support and wish their businesses well as they struggle to navigate the Covid climate with all the extra work that is required for the hospitality sector to keep functioning.

## #In conclusion

In line with my ‘preparing for the worst and hoping for the best’ strategy I am making a firm commitment to do my best to remain optimistic and keep the Kinawahs coming!



Valé

**“How can the dead be truly dead when they still live in the souls of those who are left behind?”**

**Rhonda McKee**

McKEE Rhonda Kay, nee Codrington, late of St George, passed away supported by family July 5<sup>th</sup> 2022, aged 83yrs following a short acute illness. As per the *mytributes* notice: Beloved wife of Owen, Sister to Caroline, Keith and Dianne, Loved Mother of Kerry, Kathy and Peter, Mother-In-Law of Angela; Proud Grandmother of Oliver, Samuel, Caridwen, Holly, Amy, Elena and Meg; Great Grandmother to Killian, Vivian and Montgomery. A service to celebrate Rhonda’s life was held 15<sup>th</sup> July 2022 at St Patrick’s Catholic Church, St George.



**John Coleman 1933-2022**

COLEMAN John Henry, late of Charleville, passed away peacefully 26<sup>th</sup> July, 2022 aged 89 years. His bereavement notice: Husband of Patricia, Father and Father in law to Peter and Maureen, Lynette (dec’d). A private cremation was held for John whose home town on his enrolment at Slade was listed as Adavale. His years at school were 1948-1950.



***They fought the good fight, they finished the race they kept the faith.***



The picturesque countryside below looks out from Mt Marshall near Glengallan Homestead



**GONE BUT NOT FORGOTTEN**

As always, we are deeply appreciative of information that you are able to contribute about any of our number we have lost. Please be sure to pass on anything that should be included in our Valé or Obituary notices.

*“Be the things you loved most about the people who are gone.”*

Worthy of their Forebears



Members of the Slade Campus Past Students' Association are committed custodians of the history of Slade School and St Catharine's Church of England Girls School, and of the two schools which preceded the formation of St Catharine's Warwick, St Catharine's Church of England Girls High School, Stanthorpe and CEGS Warwick and the Warwick Christian College. Members of the Association may include past students and members of staff of Slade School or of St Catharine's Church of England School, or of the St Catharine's Church of England Girls High School Stanthorpe, or the Church of England Girls School, Warwick or Warwick Christian College and their descendants, past students of any other school, who have attended the campus and members of staff of any other school, who have attended the campus.



**St Catharine's/Slade School Facebook**  
Our Facebook page has 522 members as of August 03, 2022 and continues to grow strongly

## *See what we're seeing and sharing on Facebook!*

Facebook is the 21st Century way to find out many things. Kathy Fabila (1972-75) took the initiative of establishing this page 6<sup>th</sup> July, 2014 for our past students to reconnect with one another in a respectful, non-confrontational way. The rules of our closed group include being kind and courteous, no use of hate speech or bullying, no promotions or spam and to be protective of everyone's privacy. Our aim is to get everyone connected again, to share stories, our families and continue friendships from where we left off decades ago. Only members can see who's in the group and what they post.



May 13 Nigel Faulkner shared this photo, part of a set of images captured by Warwick Christian College VET Co-ordinator and Drone Instructor looking down from the campus upon Warwick showing the Condamine in full flood on that morning.