



# KINAWAH

VOLUME 2016

WINTER SPRING EDITION

## Generations:

### THIS ISSUE

- Generations: 1.
- Editor's Notes 2.
- Lost and Found 2.
- 2016/17 Committee 2.
- Cookie's Corner 3.
- On the Sick List 3.
- Church of England 3.
- Boarding School 3.
- Stanthorpe 1908 3.
- 90 Years since 4 - 5.
- the foundation of 4 - 5.
- Slade School 4 - 5.
- Dear Editor 5.
- The Tamrookum tale 6.
- Links in the Chain 6.
- Breakfast Creek 7.
- Reunion 7.
- Garden City 7.
- Golden Girls turn out 7.
- for Spring 7.
- Jumpers and Jazz 8.
- Warwick 2016 8.
- A river runs 9.
- through it 9.
- Vale 10.
- Wendy Cavanagh 10.
- Sally Bagita 10.
- Odi Lebasi 10.
- Margaret Tabua 10.
- Old and Interesting 11.
- Facebook 12.
- Still More 12.
- Humour with Byte 12.

You probably had no idea there is an entity with the dubious title, the Australasian Order of Old Bastards. They are an organisation based on fun, fellowship and joviality whose main purpose is to raise funds for a variety of worthy charities across Australia. Children's charities, the fight against cancer, disaster relief—all these and more have been helped by the AOOB. Recently **Steve Cooke** attended one of its functions at the Gold Coast and got stuck into some serious fund raising with three old ...



Slade Boys: **George Hannaford** 1943-1945, **Jeffrey Hannaford** 1962 - 1969 and **Ian Hannaford** 1963 - 1965. George is living at Helensvale, Jeffrey is based in Inglewood and Ian lives at Oxenford.



Fabulous Facebook page founder, **Kathryn Inman** (Fabila) 1972-1975, **Leeann Smith** (1975-1978) **Rick Wiseman** 1971-1976, **Suzie Wiseman** (Overell) 1973-1975, **Jim Wiseman** 1970-1975, **Helen Tite** (Spinks) 1972-1974 and **Sherryl Munn** (Brown) 1974 - 1975, together again for the 2014 Breakfast Creek Reunion. And where are they now? ... Kathy:— Brisbane; Leanne:— Bundaberg; Rick:— Brisbane; Jim:— Mt Jukes; Helen:— Roma and Sherryl:— Ipswich. What a fine looking bunch!

G'day from **Susie Kite** (Jackomos): Susie remembers some great times at school (1977 - 1981) and has kept in contact with some Slade mates over the years. She was a member of another Slade FB page and has no idea what happened to it! Her brothers, Barry and Brian Riddiford were first in the family to go to Slade followed by her sister, Jenny, in 1976. She has worked as a TAFE teacher for the past 14+ years and lives in Cairns. She has lots of old photos and school magazines which many of her era will be very pleased to hear about.



SCPSA Inc  
www.sspsa.com.au  
info@sspsa.com.au

Editor  
Joan (Clothier) White  
28 Teesdale Avenue  
Toowoomba QLD 4350  
07 4634 4853  
kinawah.editor@gmail.com

Steve Cooke President  
Logan City Golf Club  
2 Golf Course Drive  
Meadowbrook QLD 4131  
PO Box 7038  
Loganholme QLD 4129  
0418 403 733  
07 3200 3681  
Fax 07 3805 3522  
stevecooke@connectfinanceqld.com.au

**IMPORTANT**  
Are the contact details we have for you current or about to change? Don't forget us when you change your address or email service provider.



**IS**  
**YOUR CLASS**  
celebrating a  
**MILESTONE** in  
**2016** or  
**2017?**

The girls in the classes whose Senior Year would have been 1970 and 1971 have the wheels in motion **NOW** for their own reunion. Don't let the grass grow under your feet. Why not get together and catch up while you still can!



## Editor's Notes...

**2016 MARKS 90 YEARS SINCE THE FOUNDATION OF SLADE SCHOOL** and this Kinawah includes a brief outline of what has transpired at the campus in those 90 years. It is difficult to say what the founding fathers of Slade and the two Warwick C of E girls schools would make of events of recent years. What is clear is that neither school would have become a reality without the substantial financial contributions and vision provided by its benefactors, at a time of significant hardship surrounding World War 1 and the Great Depression. All of us are part of this legacy no matter how we view our association with the schools we attended or our own personal feelings about it. What we choose to do about it is up to each one of us. There will be more articles of historical interest to come in later issues of Kinawah.

**ON THE SUBJECT OF OUR COMMON HISTORY**, on the next page I am pleased to be able to feature a picture that was published about the time it all began with the establishment of the Church of England High School for Girls in Stanthorpe, apparently after a (presumably supportive) visit from His Grace, the Archbishop of Brisbane. What I have shown comprises the sum total of the information that was given but it does suggest the photo was part of some advertising for the new school. I am sure everyone will enjoy the rosy description of the good things that the facility and its location was offering! Most of us have never seen a photo of this establishment, so hugely significant to the girls who passed through both St Catharine's schools so it will be a first for some!

**THE TAMROOKUM TALE**, touches on the Centenary celebrations of All Saints Church between Beaudesert and Rathdowney. This historic church, beautifully crafted out of local timber has some surprising connections for us but you will need to read the article to find out more! We have Madeline Blyth to thank for putting us on the trail of this story.

**INDIVIDUAL SMALLER REUNIONS** for our past students are taking place at various places around the country. We don't always hear about them but love to read about them so if you have held one of these we'd like to hear about it. Earlier this month, celebrating Spring in the Garden City, a group of our old girls got together in Toowoomba for afternoon tea and lingered on for what was a most pleasant gathering. Read more about it on Page 7.

**JUMPERS AND JAZZ:** If you have had very little to do with Warwick since your school days you might be surprised to discover some of the things that have been happening there in recent years and the way it all looks now. Page 8 is a photo collage to give you an idea of how the city scrubbed up when my husband and I visited it during the festival in July. You might also be surprised to read some other points of interest about Warwick in **A RIVER RUNS THROUGH IT**. I, for one, have mainly thought about Warwick for many years as the place where we went to boarding school but there is much more to it than that! I managed to unearth quite a few surprising bits and pieces for you to check out on Page 9. If you have anything else of interest to add I would be pleased to hear about it from you.

*Until next time...enjoy the read! Joan (Clothier) White*

## LOST AND FOUND

I can now report some results following this column in the most recent Kinawah.

John R Allen now takes his place on the deceased students list—his passing is noted on page 6—and thanks to your help we are back in touch with Sandra Marriott.

Unfortunately we no longer have any contact details for

Diane Cairns  
Keith Crook  
Peter Hollinshead  
Bernie Manns  
Neville McEwan  
James McLachlin  
Roy McPhee  
Richard Newton  
Raymond Smith  
Noel Weaver  
William Webb  
Michael Westlake  
Robert G Wood.

Here is the next list of 12 names of those for whom we are currently unable to confirm contact details.

In the B's, C's and D's this time:

Viriya Boakham	1960-1993
Margaret Boatfield	1941-1950
Peter Budge	1975-1977
Trevor Campbell	1950-1956
Eric G Campbell	1942-1945
Barry Cedric	1976-1978
Hing Chee Woo	
Graham J Chisolm	1967-1967
Mrs D Clay	
Judith A Bullus	1953-1955
Leonie A Little	1959-1961
Joyce Davie	

If you know any of these who may have died we need to know.

If you can otherwise help find the missing contact I would be very glad to hear from you.

## 2016/2017 Committee

President	Steve Cooke	0418 403 733	stevecooke@connectfinanceqld.com.au
Vice President	John Bayliss	0418 987 900	johnbzz@bigpond.com
Secretary	Jenny Schonfisch	07 3279 8197	bonniedoon07@bigpond.com
Treasurer	Nigel Faulkner	07 5548 6655	nigel.faulkner@hotmail.com
Kinawah/Contacts	Joan White	0428 344 853	kinawah.editor@gmail.com
Area Reps	Ray Dickson	0419 702 657	dicksonsare@gmail.com
	Paul Masson	07 4623 5307	pbmasson@bigpond.com
	Peter Ramsay	07 3245 4706	peterramsay47@gmail.com
Museum	Leigh Nisbet	0418 156 296	leenis@bigpond.com
School Liaison	Peter Ramsay	07 3245 4706	peterramsay47@gmail.com
Archivist	Ted Ross	02 4885 2227	cro56704@bigpond.net.au
Assistant Archivist	Helen Moloney	07 4635 0573	hmoloney@aapt.net.au
Mentoring Liaison	Jacque Baxter	0458 731 172	jacque.baxter@gmail.com



## Cookie's Corner

**I AM PLEASED TO REPORT THAT THE OFFICE OF FAIR TRADING HAS APPROVED THE CHANGE OF NAME FOR THE ASSOCIATION.** This result comes about through the diligent efforts of our committee which has worked together to achieve the best possible outcome for us to remain a viable entity as we look to the future. From now on, as we were all made aware via notices circulated before the Special General Meeting and AGM, our official title is Slade Campus Past Students' Association Inc. While we realise that 'St Catharine's' not being part of the name of the Association has not delighted everyone, the truth is that no matter how long and hard we thought about it, no one was able to suggest a sensible/simple alternative, especially in view of the fact that Warwick Christian College needed to be considered too. The Slade, St Catharine's and Warwick Christian College Past Students' Association Inc was never going to roll easily off the tongue and this didn't include the C.E.G.S. component either. In the end, while we are aware that many of us never attended the Slade Campus, this name, as was stated in my report at the AGM in June, seemed to most simply represent what we have tried so hard to achieve for all concerned.

**I am also pleased to report that the response to our invitation to take out memberships under the new Rules of the Association has been encouraging.** It is especially heartening that so many of our older members have shown their support by leading the way in this. We hope many of our younger past students will follow their example. If you haven't fully digested all the information that has been circulated to date, it may not have registered that the old financial life memberships have now been dissolved. There are no more than one or two exceptions to this: those who paid for a life membership within the last two years under the old rules (their memberships will be converted to a corresponding number of years in line with the new rules). The Membership Application Forms that have been sent out give a range of options for becoming members of our 'new' association and the returned forms are allowing us to update contact details for those who have sent them in. If you need another form emailed to you please let us know. A progress report will be available after our next Committee meeting in a few weeks.

**I look forward to touching base with everyone again as soon as I am back in the country.** JB and I are off on the African trip that we have been planning for a long time now and expect to have lots of stories and pictures to share when we return.

**Until then I hope to see you all at the Breakfast Creek Hotel on October 15.**



2016

**Past Students  
GET TOGETHER  
Saturday October 15  
Breakfast Creek Hotel  
2 Kingsford Smith Drive  
11.00 am for lunch  
Meet up with old friends  
Stay late if you like!**



**Alison Wiley** of The Tamrookum Tale fame on Page 6 is not 100% well.

Also keep in mind:

**Roger Ng** and

**Brian Stehbens.**



**... ONE SINGLE DREAM is more important that a thousand negative realities ...**

Adeline Yen Mah

## Church of England Boarding School Stanthorpe 1908 QldPics

RARE PHOTO OF THE ORIGINAL ST CATHARINE'S THAT WE ALL KNOW ABOUT BUT HAVE SELDOM SEEN



### Sisters of the Sacred Advent, Church of England Boarding School

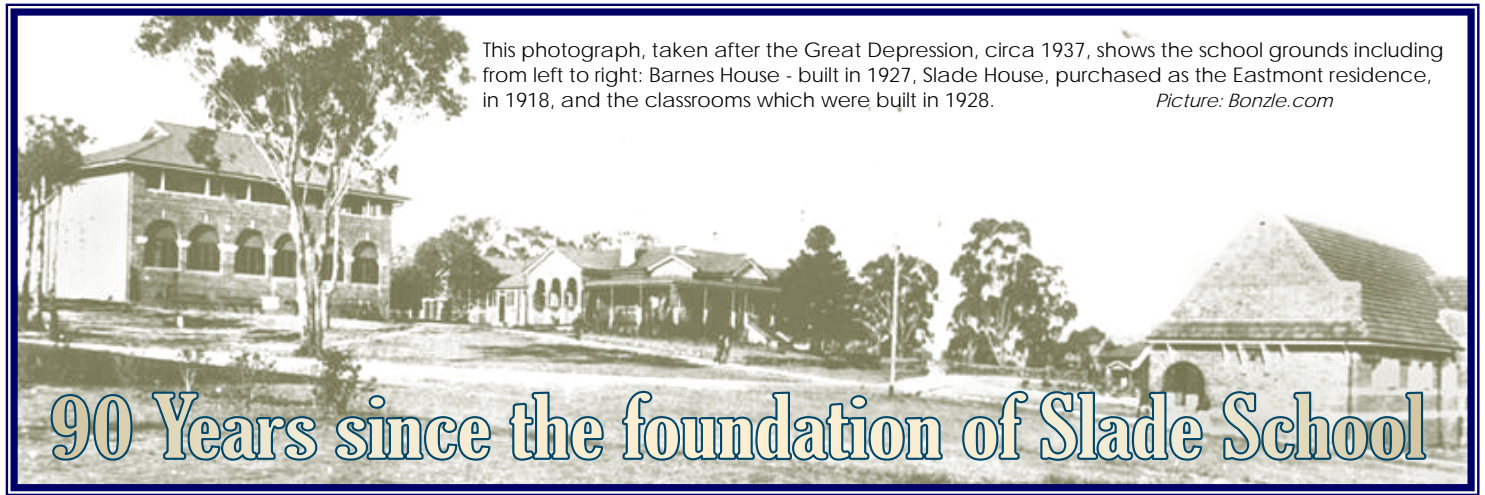
Stanthorpe has one of the Best Climates in the State — 2500 feet above sea level.

School stands in Extensive Grounds, and has all Modern Improvements.

Principal: The Superior of the Society of the Sacred Advent.

Head Mistress: Sister Evelyn, S.S.A.

Assisted by Competent Staff of Teachers



This photograph, taken after the Great Depression, circa 1937, shows the school grounds including from left to right: Barnes House - built in 1927, Slade House, purchased as the Eastmont residence, in 1918, and the classrooms which were built in 1928.

Picture: Bonzle.com

## 90 Years since the foundation of Slade School

**THE YEAR IS MORE THAN HALF OVER and much has happened for us already but 2016 marks yet another milestone for Slade Campus...**

**90 years is a Diamond or Emerald Anniversary and although we normally apply these traditional symbols to years of marriage celebrated, the image is apt as we step into a new era and ties with Warwick Christian College have been forged well beyond the bricks and mortar that we hold in common.**

**The following is a collation of information from archivist, Ted Ross, a column in the Southern Free Times 10 March, 2011—just before Expressions of Interest closed for the purchase of the Campus—and the document, Ken Mardon Historical Walk. History shows that the Save Our Slade campaign successfully brought a 'stay of execution', its Heritage-listed features secured. We look back now on a little of our shared history...**

**Warwick was the first town on the Darling Downs**, established in 1849 on the banks of the Condamine River, 158 km south west of Brisbane on the Cunningham Highway. Rich grazing land around the area supports horse and cattle studs, fine wool and grain. The railway line came through from Ipswich in 1871.

**Slade Church of England Grammar School**, opened 1926 in Warwick, was the result of a meeting of minds with a shared vision and substantial support from benefactors but the way had not been simple or straightforward.

**As early as 1911** Warwick was fast gaining a reputation as an education centre. Warwick East, the first National School in the Moreton Bay District, opened November 1850, followed by the Central School and the Convent School in 1874 then the Technical College in 1906, while in 1857, almost three years prior to the State of Queensland coming into existence, the Rev. Benjamin Glennie set up a Church School in the town. This school did not survive for very long but the concept did. By January 1912 the Christian Brothers College and the State High School had been opened followed by the Presbyterian Girls College in 1918 and Scots College in 1919. The Anglican community led by Glennie, first Rector of Warwick, and soon afterwards, the Rev. W.P. Glover felt the need to establish its own church run schools.

**February 13, 1918** the Church of England Girls School opened, funded by generous giving on the part of parishioners of Warwick and beyond. Over £6,000 was donated.

**The establishment of the boys' school** was set back, by World War I and its many patriotic appeals and obligations but the idea was endorsed later in 1918. All that remained was to bring it to fruition.

**A site, in Weewondilla Estate** was chosen by J.H.S. Barnes and W.P. Glover. It was billed as 'the pick of the suburbs with splendid views, high, clean, and well drained, the outlook bright and picturesque, and the south-easterly aspect just such as home builders desire with water able to be obtained from the Municipal Reservoir close by'.

The Churchwardens purchased the property which consisted of 'Eastmont', a substantial brick residence with 8 acres of land and part of Weewondilla estate consisting of 10 acres suitable for a sports area in October 1918 from 17 different landowners. Total cost was £7,000. This was met with support from such well known names as W.B. Slade, J.H.S. Barnes, C.E. McDougall and R. Mcansh—the same men who had been instrumental in opening the Church of England Girls School that year.

**Total enrolment upon opening of Slade on 9th February, 1926 was six boarders**, one of whom, Kendal James Lyndhurst Mardon, resided in Warwick until his death in 2002 aged 89. 'Eastmont', renamed **Slade House**, served at the outset as the administration building, the headmaster's residence, boys' dormitory and dining room.

“ **Total enrolment upon opening of Slade on 9th February, 1926 was six boarders . . .**

**Due to the Great Depression**, the school benefited by being given a gang of workmen to do maintenance work at the Government's expense. Twelve relief men worked on the entrance drive, terrace and roses in front of Slade House. The Bunya Pine at the front of the building is all that remains of the original garden. This crew also built a parade ground for the cadet corps.

**William Ball Slade** who lived at Glengallan Homestead was a benefactor of the school from its foundation, hence the name 'Slade'. Growth was slow because of finance. The first building that was erected was for the boarders and was known as **Barnes House**. It was double storeyed accommodation with two small bedrooms for housemasters, designed to sleep 20 but housed up to 80. It was very

cold and Spartan accommodation indeed.

**Chapel House**, known previously as McCann House and/or Clovelly had been purchased by the forward thinking Slade founders in 1920—fully 6 years before the School opened. This building became the most versatile and significant building at the school. Originally it was used as classrooms until purpose built classrooms were constructed in 1928. Also in 1928, part of the building was converted into the headmaster's residence for incoming headmaster, the Rev. F.M. McKeon. J.H.S. Barnes carried out these renovations. In 1932 a new headmaster, Rev. C. Newton Mell was appointed. During his midwinter holidays, Mell recessed part of the verandah lounge so that it could be used as a chapel. A detachable communion rail was made which slipped into two sockets and kneeling cushions were provided for communicants.

**Four new classrooms** comprised the second block built at the school in 1928. This brick building with its steeply pitched roof, sometimes mistaken for a place of worship, did, in fact become the School Chapel many years later when the one that had been in use was needed for more dormitory space to house the St Catharine's girls. The old classroom block was consecrated as the School Chapel in September 1991 by Bishop Adrian Charles. **David Binns**, Anglican priest, artist and curate at St Mark's for a time, designed stained glass windows for the south side of the chapel.

**In 1942**, with Australia under threat of a Japanese invasion there was a huge influx of students from coastal schools. Chapel House was enlarged to hold twice the number of seats. It had become not only the rectory for the resident chaplain but also provided space, although extremely crowded, for over 200 students during a service while doing double duty as a dormitory with verandahs extended and enclosed. Already, when the school formed its first cadet unit, a section below had been built in and secured as the unit's armoury. A number of timber homes, with their land were also purchased along Horsman Road. **Atkinson House** and its land was also bought in 1944 for dormitory accommodation, named for Mary and William Atkinson who provided the finance. It was later moved closer to the cliffs to make way for the new dormitories built in 1966-1967.

**The school bell**, donated by J.H.S. Barnes, came from 'Canning Downs' and was situated at the western end of the classrooms.

**The Old Boys Association** provided the white railing fence and a timber grandstand

for the school oval, redeveloped from an orchard purchased on the northern side of Horseman Road. A silky oak tree was planted for each past student whose life was lost while on active service in World War 2 with a brass plaque bearing the serviceman's name.

**A purpose built Honour Room** was also built and two adjoining rooms became the science laboratories. These became known as the **Science War Memorial Block**. This work was mostly financed by the Old Boys' Association. Another building was adjoined to Slade House as the **Dining Hall** with its 'high table' for the staff.

**The campus included a primary school section** with classes in Chapel and Atkinson Houses; they boarded at 'Highfields', Marshall Street, half a mile from the school. Students were fed at the school and made this half mile walk to class four times daily.

**Another cottage** was purchased near Barnes House for a dispensary, hospital and a home for the nursing matron. During the 60's, the school acquired family residences and sheds to house the growing number of students.

**Father Peter Mayhew from the Bush Brotherhood of St Paul** was also key in keeping Slade School functioning.

**Keith Dan**, who succeeded Fr Mayhew as headmaster of Slade for eight years, went on to become Head of Mathematics at Churchie, East Brisbane. \*\*

**Another classroom block** was built as well as a boarding house along Horsman Road, named after the then longest serving headmaster, **Archdeacon Byam Roberts**. This building was refurbished in 1986.

**A 24-metre swimming pool** was gifted to the school by a western grazier, Mr James Fletcher and was officially opened in 1967.

**A headmaster's house** was built in Keith Dan's time but he never lived in it. However, his successor Mr Horace Whybird lived there

for seven years with his wife, Mavis and their five children. All but the eldest of the Whybird children attended Slade and St Catharine's.

**A library was built**, becoming known as the Art Block and agricultural land was later acquired further along Horsman Road.

**Edward Prince** (on staff at Slade 1956-1990) was appointed headmaster in 1974, and even then there were fears for the school's survival. In that same year, St Catharine's School in Locke Street, Warwick, run by the Sisters of the Sacred Advent, gave up the struggle to survive and came under the leadership of Slade School.

The site for the girls' school was sold for housing, some of its buildings, including the Assembly Hall and Home Economics building removed to the Slade Campus (1977) and the girls began to board at Slade. It was after this time that the kitchen and dining hall were upgraded.

**It was not until 1983** that a suitable building for girls' boarding was in use on the Slade Campus when **Edward Prince House** was opened officially in October, 1983.

**In 1990, the undercroft was added** as a large common room for presentations and performances and in 1992, extensions were added to **Roberts House** for male boarders.

**With time, Slade's clientele was undergoing change** and there were many Papua New Guinea, Asian and Indigenous students enrolled in the 80's and 90's. Prince noted that in all his time at Slade, very few of its students actually lived in Warwick.

**Prince's successor, Bob Grandin** led the school until its closure at the end of 1997.

**ACGS, Brisbane took over the School in 1999.** The first residential students arrived on July 24, 2000. The head of Slade Campus was Michael Harding, appointed in April 2000. He came to Warwick from Adelaide with a strong interest and experience in middle schooling.

**Closure of the Slade Campus—again—**

was announced in 2005 on June 24th with ongoing costs cited as the reason. It had been touted as the centrepiece of AGC's outdoor education program. Churchie said at the time that the Slade program had been beneficial to students—more than 600 a year stayed at the campus while spending time in and around the shire—but the same educational benefits were able to be delivered at its East Brisbane campus. The AGC initially said it did not plan to sell the site but it was sold to Warwick Regional Council in 2006.

WRC eventually put the 8.77 ha site up for sale in 2011 with Mayor Ron Bellingham describing it as prime development land close to the Warwick central business district. Earlier that same year during the disastrous Queensland floods it had been used as an emergency evacuation centre.

**In putting it on the market the mayor said** "Our vision by purchasing the campus four years ago was to gain more time to set it up as an educational facility, so I'm hoping we'll hear from people who want to use it as an educational facility but obviously Council is open to submissions from parties with other interests." As we know, redeveloping the campus as a housing estate was one such option. Warwick Christian College purchased the Slade Campus in March 2012, relocating there in readiness for the start of the academic year in 2013.

**The first WCC Year 12 students** will graduate December 2018 at which time they will be eligible to become part of what is now the Slade Campus Past Students Association. SCPSA is now enabled to look forward to an enduring and dynamic future.

\*\* Keith Dan was co-author of Mathematics text books widely used throughout QLD schools and likely used by many of us.



*"... oaks grow strong in contrary winds and diamonds are made under pressure"* Peter Marshall



**In the absence of any fully developed letters to the editor in the last three years it seems apt to present this one here, immediately following the outline of Slade's history presented above.**

**At the most recent committee meeting held July 1 it was noted that the recent focus of the Association had quite rightly been on the struggle to Save Our Slade.**

**Our debt to those who worked so tirelessly to achieve the eventual outcome was impressed upon us by Steve plus the reminder that none of what we have achieved in the last three years would have been possible without their efforts.**

**Those present at the 2015 AGM will recall the recognition given to all those involved in the SOS campaign and the**

**presentation of the framed tribute in honour of its success.**

**It is on this foundation that we can now look to the future with confidence and renewed energy...**

**A**s some people did not think the Association was still in existence I just want to highlight all the work that has been done over the past few years by hardworking committees.

I am glad that Steve our President is happy with the Past Students Association when he said it was re energized.

However I hope everyone remembers how much energy went into Save Our Slade by our past committee members who supported the marvellous work of Margaret McKinnon.

We attended Council Meetings, meeting with the mayor, SOS Ball, Open Days at the school, meetings at private houses and meetings at the hall with the SOS Committee and gave presentations

on behalf of Slade School to the Council.

Those involved were Paul Holland, Peter Ramsay, Bruce Mauch, Helen Moloney and myself—plus Rod Lander, Allan Donovan and Aub Warrenner met to save the cricket pitch on the Slade Oval.

Also we had great attendance at our AGM's where we organized bus trips, boat trips, visits to museums, wineries, and art galleries, a dinner dance with a live band, concerts by Past Students and Trivia nights. We organized AGM's at the Sunshine Coast, St George and Townsville to give opportunities for Past Students from those areas to more easily attend the weekends.

All these required energy and organizational ability by previous committees.

I would like to congratulate the person who put the article together about Sister Angela. Well done.

Margaret Stewart (Ree)

Past President and Secretary

*It's not what you look at that matters - it's what you see.*

Henry David Thoreau

# THE TAMROOKUM TALE ...

Centenary celebrations and old school connections—photo, the Beaudesert Times

You may not have heard of Tamrookum before this but the heritage-listed All Saints Memorial Church, dedicated August 1915 has some close connections with us. Tamrookum, a small rural locality amid South East Queensland's Scenic Rim, between Beaudesert and Rathdowney, is the home of this small, privately owned church, built from local timber: blue gum shingles form the roof and red cedar is featured elsewhere.

Built as a memorial to Robert Martin Collins, pastoralist, parliamentarian, pioneer, and known as the father of the National Parks movement, the church is a popular wedding venue but, for its centenary celebrations, All Saints was packed with people who came from near and far, each with their own personal connections. Those who had been married, christened or had buried family members there shared the occasion with descendants of Robert Collins, at Sunday service and the annual family picnic on 30 August, 2015...



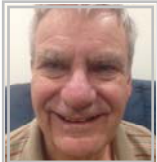
At the historic celebrations were Robert Collins's great-granddaughter, Susan Zoomers, granddaughter, **Alison Whiley**, nee Ralston, both pictured here, and Madeline Blyth, fellow 1940s past student. Alison says that one of her memories as a young girl is of walking inside the church hand in hand with her mother. "It's always been there for me, it's part of my life, it's a part of us, our family has come and gone but to see it now, in such good condition, is quite lovely". Alison, 87, one of the trustees, cut the cake and daughter, Kath Whiley, was the Beaudesert Times contact person who helped verify information for this story.



## Links in the Chain

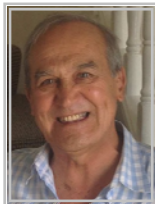


### SOME OTHER TAMROOKUM CONNECTIONS...

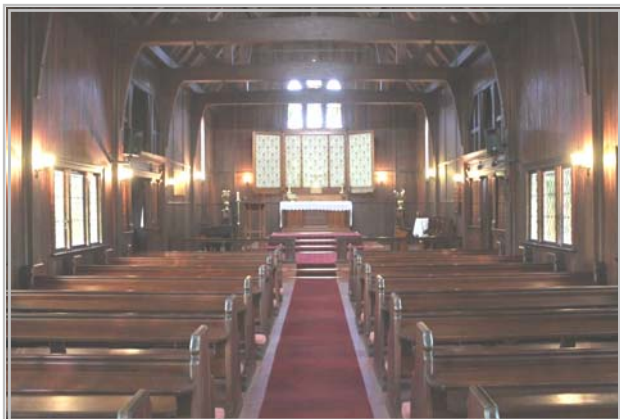


**Mike Rippin** Atherton NQ (1951 - 1958, the Bush Brotherhood era): *We buried John Allen there some years ago!! John and I were good friends and the last time I and my wife were at Slade, John and his wife, Leith, took us there.*

**Andy Bode** Arundel (1959 - 1962): *I spent a weekend with the Arthy family at Tamrookum back in 1968. We went to church there and were stunned by the timber and natural beauty of the church. Andy and Geoff Arthy played in the Dalby Rugby Union team made up of old Scots boys and a couple of Slade boys 47 years ago while Andy was teaching at Dalby High school as part of the Risdon Cup competition. (This competition for A Grade players remains the symbol of Rugby Union Supremacy on the Darling Downs.)*



Below is a peek at what Andy and Mike are talking about.



### COOLAH COINCIDENCE

**MADLINE BLYTH IS A WONDERFUL AMBASSADOR** for our Past Students Association, organising regular lunches for old school friends from her own 1940s era. **Coolah Cassimatis**, (1943-1944) attends all of Madeline's lunches. **Jenny Schonfisch** briefly relates here how Coolah first reconnected with Madeline—more than a few decades after they were at school together!

" I was a travel consultant and quite a number of years ago was working at the Queensland Teachers Credit Union when this lady came to my desk with a friend and I booked a trip for them.

Whilst I was waiting on the phone for the Tour Operator to answer the phone, I started a conversation with the ladies and I asked Coolah where she was from originally and she said *Stanthorpe*.

I enquired where she went to School and she responded, *Oh, a school in Warwick which you probably haven't heard of*, to which I ventured ... *St Catharine's?*

At this, her eyes lit up and, mouth open in astonishment, she asked *How do you know that School?*

I said, *Well I attended that School*. She was so excited, she nearly fell off the chair. Coolah then questioned me further and I told her I probably knew some of the girls from her era, as I was a member of the old girls association.

I mentioned Madeline, and she had no trouble remembering her. I was able to tell her I was in contact with her old school friend and asked if she would like me to put her in touch (with Madeline's approval). Of course, Madeline invited Coolah to lunch and the rest, as they say, is history ... "





**Saturday, October 15**  
**11 AM FOR LUNCH**

## Breakfast Creek Reunion

### 2016 ANNUAL GET-TOGETHER

## Slade/St Catharine's Past Students

2 Kingsford Smith Drive - Breakfast Creek. 4020

- There will be an area set aside for us at the front.
- Buy your own drinks and meals
- Partners etc are welcome
- No speeches or formal proceedings
- Catch up with old class mates in a relaxed atmosphere

TO FIND OUT MORE, CONTACT  
Richard Cleal: (07) 3420 6541 0447 447 236  
rcleal@bigpond.net.au

## Garden City Golden Girls' turn out for Spring



**IT ONLY TAKES A SPARK TO GET A FIRE GOING:** The first two lines of the well known gospel song, *Pass it On*, might have been an apt description of the response generated by the invitation to St Catharine's old girls living in and around the Toowoomba area. They met for an informal afternoon tea on Monday, September 5 at **Kingfishers Café** attached to The Springs Garden World at Kearney's Spring. The only two non-locals were good friends, **Jenny Schonfisch**, whose brainchild the gathering was, and **Pat Spies** both of whom live much closer to Brisbane. In this blooming garden setting, just a week or two out from Toowoomba's Carnival of Flowers, seventeen past students, most, previously quite unknown to each other, met to enjoy a bouquet of memories that all of us could relate to.

**A good cross section of eras** was represented but all were united by that unique bond beautifully described by Jenny Schonfisch: friendships and respect forged through living with each other, attending classes and church services together and participating in all the many and varied activities, in sickness and in health, that the school provided—much like a family really!

**By way of introduction** everyone outlined what years that they were at school and who the Sisters in Charge were while they were there plus a mix of memories.

**Helen Cameron** recalled Miss Cant conscientiously patrolling the carriages of the steam train carrying students returning home for the school holidays on the main western line. This was to make sure nobody got up to any hanky panky with boys, Slade or otherwise, who were making the same journey. Helen was only going as far as Roma but those going all the way to Charleville enjoyed the luxury of a sleeper carriage. A good many of us will never forget **Alice Cant**. She taught at St Catharine's in Stanthorpe before joining the staff of our school in Warwick. She was making her own way back to her home town, Charleville, for the holidays and we can only surmise from this that she did not fully enjoy the benefits of a sleeping berth on the train either. Helen was one of the Hennings attended Slade and St Catharine's over the years.

**Dot Raymond** reminded everyone of the chilblains we experienced in Warwick's oh-so-cold winters and credits her lifelong love of English to Miss Cant, surely the ultimate nod to any dedicated teacher.



TOP LEFT TO RIGHT: **Lois Speed** (Goodwin 1959-1965), **Jenny Schonfisch** (Croft 1959-1960), **Win Munnings** (Boatfield 1944-1946), **Pam Somerset** (McIver 1958-1959), **Helen Cameron** (Henning 1960-1961) and **Shandra Baker** (1963-1966).

LOWER LEFT TO RIGHT: **Ruth O'Donoghue** (Postle 1964-1966), **Eleanor McGovern** (Halter 1955-1958), **Pat Spies** (Marshall 1959-1962), **Wilma Laughton** (Morris 1955-1956), **Gloria Coombe** (Donovan 1943-1944) and **Jocelyn MacKenzie** (Cunningham 1942-1945). Out of view are **Helen Moloney** (Robb 1962-1967), **Jocelyn Martin** (Wright 1961-1965), **Judy Stevens** (Fletcher 1956-1962) **Dot Raymond** (Gosper 1961-1967) and **Joan White** (Clothier 1965-1969) who took the above photos on her phone. Sincere apologies girls!

**Gloria Coombe** was one of the St Margaret's girls evacuated to Warwick during World War 2. She, along with **Win Munnings** and **Jocelyn MacKenzie**, remembers the whole school racing down Palmerin Street when World War 2 was declared over—a momentous celebration which was echoed across the entire nation.

Gloria also recalls approaching Sister Kathleen about St Catharine's old girls having an annual dinner of its own just as the Slade old boys did. The idea was met with delight by the good sister, the seniors of the day waited on them at the dinner which was held in **Mytton House** and so a tradition was born!

Many of the girls remembered **Sister Rachel** and **Sister Kathleen** patrolling the lane in the school grounds with a torch at night to make sure everyone stayed where they were supposed to after 'lights out' and a few hilarious anecdotes were trotted out relating to school socials, boarding school food and teachers that we all remembered. **Kitty Gladwell** and **Fay Spear** were singled out for mention and more than one old girl noted that although they didn't always enjoy their initial boarding school experiences that they missed their friends and St Catharine's once their school days were over.

**IN SUMMARY**, the afternoon could be said to have rekindled some of that same sense of camaraderie among those who attended and it most likely won't be too long before we get together again!



# JUMPERS AND JAZZ - WARWICK 2016



The streets are alive with the sound of music  
The Rose City decked out for the mid-winter cold  
It's Jumpers and Jazz, rosy cheeks and live music  
Downtown doesn't seem like our Warwick of old.



# A river runs through it . . .

ALL OF US SPENT TIME, however long or short, in the city that was home to our schools but most of us probably never knew or appreciated all of the history invested in the area generally. The following might help fill in some of the gaps!

- **Warwick, known as the 'Rose and Rodeo Capital'** was settled over 150 years ago against that reach of the **Condamine River** that we are familiar with. The river was named by Allan Cunningham for Thomas de la Condamine, former aide-de-camp to Governor Ralph Darling who became the first Collector of Internal Revenue for the Colony of New South Wales.

- **The headwaters of the Condamine** rise on Mount Superbus, part of the Main Range, pass through Cambanoora Gorge, home to platypus, glow-worms and fireflies and flow through Killarney then Warwick before joining the main Murray Darling River system further west.

- **Patrick Leslie** and his two brothers originally settled the area around Warwick in 1840 as squatters, naming their run Canning Downs. In 1847 the NSW government asked Leslie to select a site on his station for a township, which was to be called 'Cannington', although the name 'Warwick' was eventually settled on. Land sales were held in 1850, the first allotment bought by Leslie. Queensland was declared a colony separate from New South Wales on 6 June, 1859.

- **Taking care of the essentials**, the **telegraph** to Brisbane was operating by 1861 and the 1870s were boom years for the new town. In 1871 the **railway** reached Warwick, a **brewery** was built in 1873, then a **cooperative flour mill** and **brickworks** were completed during 1874.

- **Warwick has been the seat of a series of local government areas:** Borough of Warwick from 1861, Town of Warwick from 1903, City of Warwick from 1936, Shire of Warwick from 1994, and Southern Downs Region from 2008.

- **Warwick is host to the annual October Rodeo of Australia's elite bull riders.** The Australian Rodeo Heritage Centre, 4 Alice Street, Warwick, dates buck jumping back to 1857.

- **A tour of the town's historic buildings** may take in carefully preserved distinctive stone churches, cottages, schools and the railway station dating back to when locals travelled by horse and cart. Visitors might choose to stop by the operational steam railway locomotive and plan a trip with one of the monthly runs from Warwick to Clifton or Wallangarra.

- **July has become known for the Jumpers and Jazz** festival when the town's deciduous trees are dressed up in custom-knitted jumpers and live music fills the streets. Added to this a little further south, Queensland's premier winter festival, Snowflakes in Stanthorpe has recently come into being. Both celebrate a time of year that many of us remember none too fondly!

- Some of us travelled back to school by train quite unaware that the railway station had come under the national spotlight years earlier as the scene of **'the Warwick Incident'**. This took place on 29th November 1917 and immediately led to the formation of the Australian Commonwealth Police. Prime Minister William Morris Hughes was addressing a crowd at the Warwick Railway Station when a man in the crowd threw an egg dislodging the Prime Minister's hat. Hughes ordered his arrest but the Queensland State policeman present—it was, after all, not long after Federation—refused to carry out the order saying that Hughes had no authority over him. The first commissioner for Commonwealth Police was appointed eight days later!

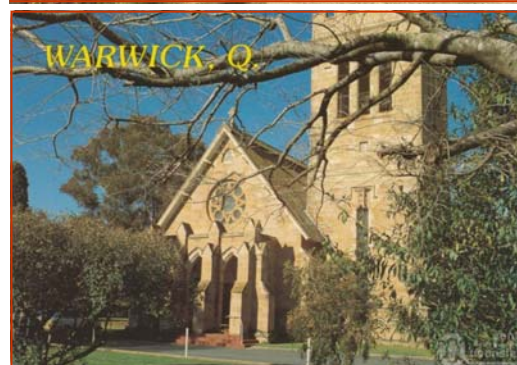
**AND WARWICK IS NOT LACKING ICONIC MONUMENTS EITHER. DID YOU KNOW THAT:**

- It is home to **two memorials to Jackie Howe** who is celebrated as the greatest shearer who ever lived. We are told that Jackie was also a natural athlete. Legend has it that he once ran against a professional runner, in bare feet. The result was a dead heat. Of course the race was held after work, where Jackie had just shorn 217 sheep! John Robert "Jackie" Howe, 1861–1920, born at Killarney, Queensland, shot to fame in pre-Federation Australia in 1892 when he broke the daily and weekly shearing records across the colonies. On 10th October 1892, Howe shored 321 sheep in seven hours and 40 minutes at Alice Downs station, near Blackall in western Queensland. This was a faster tally than any other shearer had achieved before. In the week beforehand, Howe also set the weekly record, shearing 1,437 sheep in 44 hours and 30 minutes. Howe's daily record was beaten by Ted Reick in 1950, but with the significant difference that Reick was using machine shears, while Howe's hand shears were little more than scissors. Howe's weekly record stands unbeaten as of 2005.

- **The marble statue on the corner of Palmerin and Grafton Streets** (see previous page) is of the 12th Premier of Queensland, Thomas Joseph Byrnes, and was built about 1901.

- **The Warwick Green Belt, on the banks of the river features a sculpture of Tiddalik**, the central figure in a well known Aboriginal Dreamtime story. The dreaming story tells of a frog, Tiddalik, who was very thirsty and drank all the water from the rivers and streams. The other animals despaired until one got the idea to make him laugh. Nothing worked until the eel danced and tied himself into strange shapes. Then Tiddalik laughed and the water gushed forth to fill the drought-stricken places. Many of us can easily relate to this scenario!

- **At the time of the 2011 Australian Census, Warwick recorded a population of 13,376.**



**CAVANAGH, Wendy Suzanne 1948 - 2016**

CAVANAGH, Wendy, nee Aylett passed away 28<sup>th</sup> April 2016 aged 67. Wendy, born in Devonport, TAS, the first of four sisters, born to Murray and Edith Aylett (nee Lussey of Liverpool England) was a free spirit as Sr Rachael discovered when she was a boarder at St. Catharine's 1962 - 1964. She was fun loving and always made friends easily. Wendy finished her education in Brisbane when the family

moved from the Solomon Islands to Brisbane. She worked as a secretary during which time she met her husband, Graham, but moved to New Guinea to work as an air hostess before their engagement. Married in 1968, Wendy and Graham moved back to Brisbane in 1973 but moved to the Caboolture area where they opened a real estate business and raised two children, John and Christine. They stayed here until moving to Moranbah, to work with their son in the building trade but moved again with the downturn in the mining industry. Wendy and Graham spent their last few years' together living peacefully on acreage on the Atherton Tableland in NQ where she enjoyed working with cattle and spending quality time with her grandchildren.

Following my request for more information about our PNG school friends who had passed away we can now include the following.

**BAGITA Sally**

Attended St Catharine's 1965 to 1967

**Neal House** Pro-Prefect 1966;

Prefect 1967; an A and B Basketball team member: 1965, 1966; Sally passed Junior 1965: - English C, French B, German B, History B, Geography C, Mathematics B C, Physiology C;

Sally also sat for Junior Shorthand 1966 (C)

**LEBASI Odi**

Attended St Catharine's 1965 to 1967

**Neal House** St Catharine's Sports team member 1965;

Odi passed Junior 1967: - English C, History C, Geography C, Mathematics A C,

Business Principles and Practice C, Shorthand C, Typewriting C

**TABUA Margaret**

Attended St Catharine's 1968 to 1971

**Slade House** Primary A Grade Netball team member (undefeated in 1968)

Slade House Sports Captain 1971  
Margaret passed Junior 1971 - English 6, French 4, Mathematics A 3, Mathematics B 4, Science A 4, Science B 4, History 4, Geography 4, Music C. Margaret was at school during the amalgamation period during

which no magazines were published.

The previous information comes from old Slade/St Catharine's magazines. There was also a Mary Bagita at St. Catharine's but no attendance years are recorded for her. Does anyone remember if Sally and Mary were sisters or even perhaps the same person?

Last Kinawah included an original contribution that Koi Rima and Mabel Willie wrote in Grade 8 describing their own village. It seems fitting to share here Sally's pen portrait, reproduced from a 1966 school magazine, of Hula, the village that she called home.

**HULA Sally Bagita VIB**

HULA, A TINY LITTORAL DISTRICT, situated about seventy-five miles [roughly 121 kilometres] east of Port Moresby is one of the most colourful and splendid villages in that area. On either side, it has two arc-like inlets which provide shelter for ships and canoes in stormy weather. They also provide the swimmers with sparkling, crystal-clear water and beautiful, sandy beaches. Lining these sandy shores are clusters of high-towering palm trees, backed by vegetable gardens here and there surrounding the widely scattered houses.

The people, known as Vulas, love singing and dancing as the Hulas of the South Pacific do and they are always friendly and happy. The permanent residents in the village make their living either by fishing or subsistence farming, or by running trading and transport businesses.

The Christmas-New Year Festivals attract many visitors from Moresby and elsewhere, Papuans, New Guineans or Australians are all warmly welcomed. It always gives them pleasure to have so many people taking part in their ceremonies and sporting events. The latter include cricket, basketball, football, athletics, swimming, canoe sailing and paddling, and finally traditional dances and hymn singing about the Prophets.

Although more people go to Hula during Easter and Christmas-New Year, there is always a joyous, welcoming air about the village throughout the year. For the mid-year visitors, there are the torch-light fishing and moonlight swims, or sailing, to be enjoyed. These are very fascinating sports, greatly admired by the Vulas themselves.

The houses which once stood over the water, are now dotting the shorelines and gradually moving towards the interior. The domestic water supply comes from tanks and underground wells. There is no electrical link from Port Moresby to Hula, but the people have built a tidal power plant, which supplies the Mission Station at Raukele.

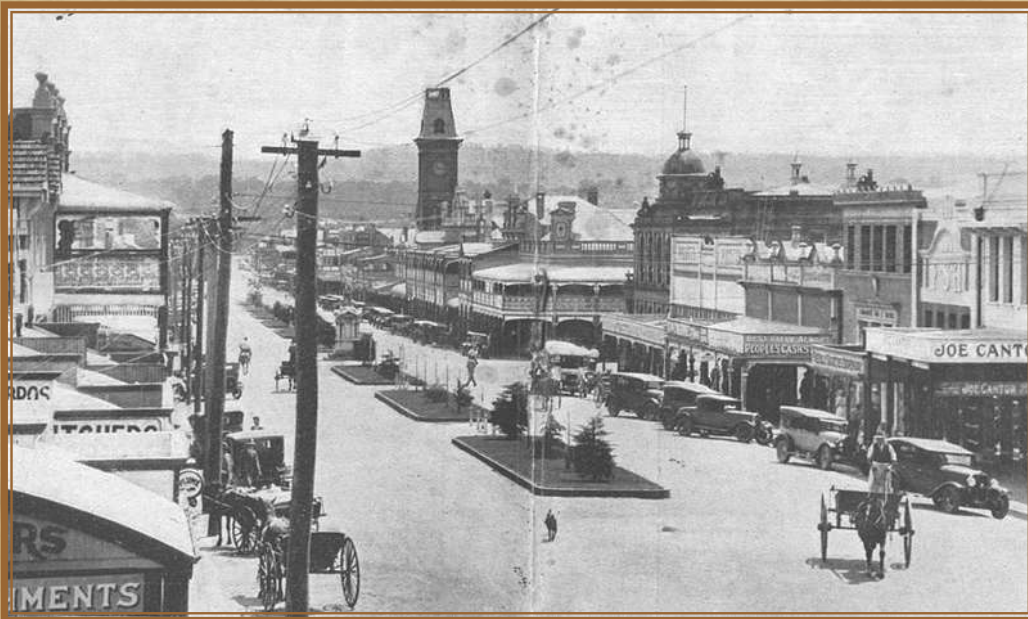
Hula is not just a seaside village, it is a people's paradise. There they find peace, joy and freedom. To complete the picture, it experiences pleasant, sunny days and cool breezy moonlight nights. All these factors, besides the joyful, peace-loving Vulas make this little village a happy magnificent place to visit.

**Editor's Note:** Our thanks to Ted Ross for delving through our old school magazines for school details about Sally, Odi and Margaret.



worthy of their forebears

# OLD and Interesting



**CENTRE OF WARWICK BUSINESS DISTRICT, 1932**

Cars of the time, horse drawn vehicles and a rider on horseback share the main street of Warwick...

The Town Hall clock tower is prominent in the background and the domed roof of the Post Office can also be seen.

Caption underneath the photograph:

THE HUB OF WARWICK.



**A MOMENT IN TIME**

St Catharine's students from Papua, Dinah Dixon, Patricia Coppard and Dawa Solomon, talk with Her Royal Highness Princess Alexandra after the Service in St Mark's Church. With the Princess is Archdeacon Hoog, Rector of St Mark's and the School Chaplain.

Photo from St Catharine's school magazine *Jubilee Souvenir Number* published October 1959.



**CLASS** FORM III

4th ROW

3rd ROW L→R BRUCE DENT, WILLIAM GORRINGE, PAUL MUNN, MARK JOHNSTONE, CRIS ROY, JOHN FAROUHAR, PETER M'CLURG, SCOTT GORRINGE, STEPHEN BUDGE

2nd ROW PHILLIP M'NAMERA, SHAN GUILFORD, RHONDA GIVNEY, DEBBIE PARSONS, ROBERT SUTTON, VALERIE BLANKET, ELAINE MARTIN, DAVID CLUNES, NIGEL FAULKNER.

1st ROW EILEEN CEDRIC, HEATHER HALL, SHARON HOOD, ALICE GORRINGE, JANINE YETMAN, MARION SUTTON, LUCY BOSON, LEANNE SMITH, GWEN WICKHAM.

TEACHER MR. GRAHAM DORMAN  
 PRINCIPAL MR. EDWARD PRINCE

# KINAWAH



SCPSA Inc

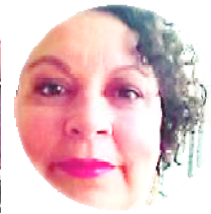
Members of the Slade Campus Past Students' Association are committed custodians of the history of Slade School and St Catharine's Church of England Girls School, and of the two schools which preceded the formation of St Catharine's Warwick, St Catharine's Church of England Girls High School, Stanthorpe and CEGS Warwick and the Warwick Christian College. Members of the Association may include Past Students and Members of Staff of Slade School or of St Catharine's Church of England School, or of The St Catharine's Church of England Girls High School Stanthorpe, or The Church of England Girls School, Warwick or Warwick Christian College and their descendants, Past Students of any other School, who have attended the Campus and Members of staff of any other school, who have attended the Campus.

We're on the Web!  
[www.sspsa.com.au](http://www.sspsa.com.au)

Find us on  
**Facebook**



## St Catharines/Slade School Facebook



The Facebook page for our past students created by Kathryn Inman Fabila 6 July 2014 now has 220 members. Remember it is a closed group so to join, you will need to ask permission. Here's a peek at some of the more recent posts . . .

### Erica Womersley July 25

I was a boarder at St Catherine's from 1967 - 1970. They were memorable years travelling from Lae in PNG to school each term. It was a lovely trip down memory lane to read the eulogy for Sister Angela in the latest Kinawah, and hear about her life beyond the SSA. She was always a woman full of warmth and empathy with a wise caring way of guiding us. After a 43 year career in SA public education I have recently retired and so have some time to do a bit of reminiscing. The anniversary of

the first Landing on the Moon the other day reminded me of how we all sat through the night in Glover House(?) to watch it. One of many stories of those years.

### Gloria Lyons July 25

I loved Angela and she became a family friend but lost touch after she moved to James Cook where I'm sure she was treasured. I loved her form of discipline and lack of inhumane punitive action for our wrong doings.... Many thanks from Psyche I'm sure. Rip Angela Daniels xoxo Always remembered with love and respect.

### Margie Thorsborne July 9

Does anyone know of Julie-Ann Johnson, Ann Langdon, Rosemary Drake....classmates 63-66?

### Kathryn Inman Fabila Aug 24

Hi Friends I am extending a hand to all of you for your kindness in helping us fund my niece Lulu's funeral. She sadly passed away from Ovarian Cancer on Monday in the Royal Woman's Brisbane Hospital. (She arrived from PNG two weeks ago but tragically the cancer was fully blown. She remained a brave woman while she was with us but we understand that she is at peace now. Her husband and family are now struggling to pay for her funeral as he hasn't been working while Lulu was sick and as many of you will know the living standard in PNG is very low and difficult for anyone who lives there. It is fortunate that the family have agreed to bury Lulu in Brisbane.

We have started a gofundme page for Lulu:

<https://www.gofundme.com/LuluGorogoArek>

and also a Bank of QLD Account in Lulu's Wish BSB - 124-151 ACC - 22506402..

We have received a sanction from the Office of Fair Trading for our fund raising so rest assured every donation we receive will be accounted for.

Thanking you in advance for your kindness.

Much Love and God Bless.

## Still more Humour with byte

live laugh love

☺ "Humour is the antidote to overthinking. It's a way of saying that life is paradoxical. Humour contains contradictions; it does not resolve them but revels in them. It says that the right way to exist among the contradictions, paradoxes, and absurdities of life is to cope with them through laughter." — Bob Mankoff

☺ Time is like a river. You cannot touch the water twice, because the flow that has passed will never pass again. Enjoy every moment of life. As a bagpiper, I play many gigs. Recently I was asked by a funeral director to play at a graveside service for a homeless man. He had no family or friends, so the service was to be at a pauper's cemetery in the Nova Scotia back country. As I was not familiar with the backwoods, I got lost and, being a typical man, I didn't stop for directions.

I finally arrived an hour late and saw the funeral guy had evidently gone and the hearse was nowhere in sight. There were only the diggers and crew left and they were eating lunch. I felt badly and apologized to the men for being late.

I went to the side of the grave and looked down and the vault lid was already in place. I didn't know what else to do, so I started to play. The workers put down their lunches and began to gather around. I played out my heart and soul for this man with no family and friends. I played like I've never played before for this homeless man. And as I played "Amazing Grace", the workers began to weep. They wept, I wept, we all wept together.

When I finished, I packed up my bagpipes and started for my car. Though my head was hung low, my heart was full. As I opened the door to my car, I heard one of the workers say, "I never seen anything like that before, and I've been putting in septic tanks for twenty years."

