



Editor

Helen (Robb) Moloney

Contact:

The Editor, Kinawah
1 Fourth Avenue
TOOWOOMBA, Q
4350

Phone: 07 46350573

hmoloney@aapt.net.au

Website

www.sspsa.com.au

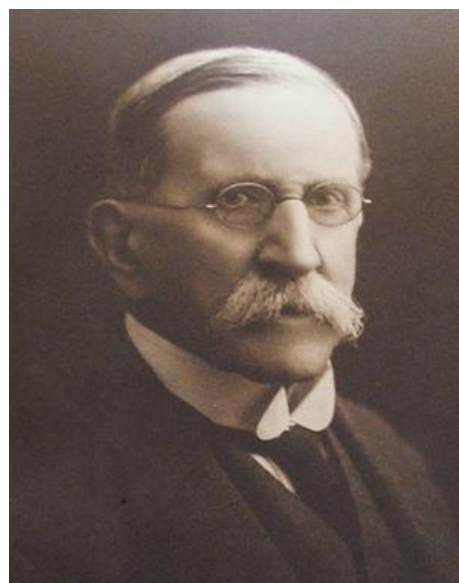
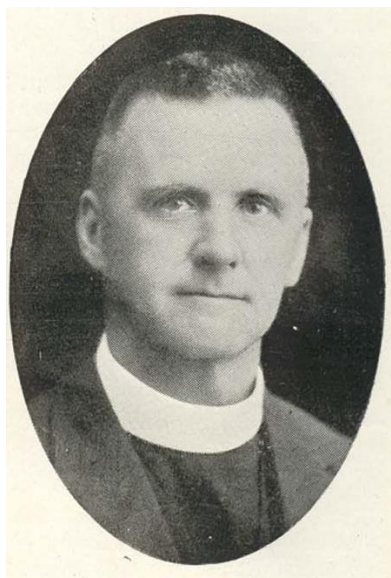
Email

info@sspsa.com.au

Inside this issue:

| | |
|--------------------|---|
| President's Report | 1 |
| Reunion Report | 2 |
| Our Founders | 2 |
| Our Early Days | 3 |
| Where Are They Now | 4 |
| Contributions | 4 |
| Slade Report | 5 |
| Museum Report | 5 |
| Vale | 6 |
| Photo Wall | 7 |
| Forms | 9 |

Our Founders



In the early 20th century when the children of Warwick needed to be educated the Rev. W P Glover of St Mark's (pictured above left), provided the inspiration that was needed to have a bunch of local business men start the wheels turning to fund and build two Church of England schools – he canvassed the district and raised 6 000 pounds. Mr. W B Slade (pictured above right) and Mr. J H S Barnes both donated generously. Other gentlemen involved in the establishment of the schools included J D Rowland, R M Stephenson, C E Macdougall and R Macansh.

A WORD FROM OUR PRESIDENT



Hello everyone, and welcome to my last Kinawah report as President. At the AGM in June I will be stepping aside and letting someone else take the reins for a period.

And, talking about the AGM and reunion, may I take this opportunity to urge you to come along? It will be a wonderful weekend of which one of the highlights will be holding the AGM in the new Founders' Room in Slade House; the Association has spent quite a deal of money and put a lot of effort into helping with the restoration and I know you will be thrilled with the end result.

It is a fitting tribute to those worthy citizens who founded our schools. Something else which is very important – we really need you to carefully think about putting your hand up to serve on the Past Students' Committee. The members who currently hold positions have done so for many years and would like to step back. It really is not an onerous task for any of the positions, but we would love some new blood to take over, so please call one of us if you need any further information about the various positions.

So the weekend consists of the AGM on Saturday afternoon, the reunion dinner that night and I know Margaret is organising a tour on Sunday to some exotic location(s). It will be well worth the trip to Warwick I assure you and I look forward to meeting new past students and welcoming old ones.

I was so sorry to hear that the Principal of the Warwick Christian School, Terrence McCorkell is moving to Brisbane in the role of Chief Operations Officer, an important administrative role with Christian Community Ministries which owns Warwick Christian College, amongst others. Terrence has been an absolute champion for our efforts in achieving our goals at the campus and has gone out of his way to assist and support us. I trust we will be able to thank Terrence for that

support over the weekend. While I am sorry to see him go, he is moving on to greater things and we wish him well.

Ray

(President)

REUNION REPORTS

AGM – Reunion

Warwick June 7-8, 2014



**We want you!
To consider
taking up a
position on
the executive
of the SSPSA
for the next
12 months or
so.**

All positions are up for new nominations and it is desirable that we have interest from new blood, particularly **younger** blood! Please think about nominating for President, Vice President, Secretary or Treasurer.

The information for the weekend is on the last page of this edition.

More About Our Founders

Information has been gathered from books by Marion Mackenzie (Knowles) and Ray Geise.

William Ball Slade CBE (1843-1938).

William was born in England and immigrated to Australia in 1861, after some legal training, to join his brother George who was a solicitor in Sydney. In 1873, W B Slade became manager and a partner of Glengallen Station, which had been part of the original Canning Downs property settled by the Leslie Brothers in 1840. He developed shorthorn and merino studs, and introduced the intensive cultivation of fodder crops. He acquired other properties in the Warwick district. He was a most distinguished citizen known and honoured everywhere in Queensland.

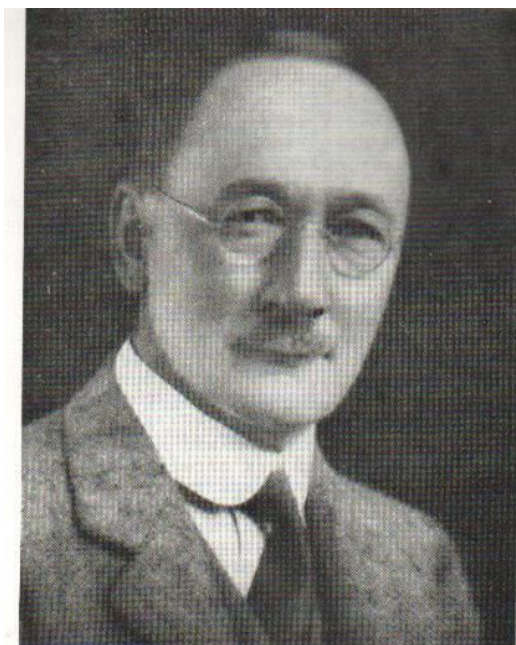
His financial contribution towards CEGS and Slade School (named in his honour) was outstanding. His two sons, Oswald and Adrian and their families continued this involvement. After Glengallen Station had passed through the hands of several owners, Oswald bought it back but

never resided there. He donated the property to the Church of England (to avoid death taxes).

(His granddaughter, Jane, attended St Catharine's 1951-56 and is a member of the Past Students Association.)

John Barnes (1872-1950) arrived in Warwick in 1917 to live at the historic homestead of Canning Downs (the family still owns the property today). He was a great pastoralist, studmaster, racing enthusiast and a businessman. Despite his wealth he remained a very humble man and was exceedingly generous to both Slade and CEGS. He purchased the house 'Listowel' for 3 200 pounds which he presented to CEGS – it was renamed 'Mytton House' – Mytton being Sarah's, his wife, maiden name. Other gifts included furniture, a vehicle for the teachers and he guaranteed the interest on the school's loan money for five years.

(His son, Ceb, attended Slade, and St Catharine's girls may remember being taught science by Barbara Barnes in the 1960s – his granddaughter).



J.H.S. BARNES, Esq.
CHAIRMAN OF SCHOOL COUNCIL



R M Stephenson (pictured above) was also a churchwarden and served on the planning committees. He was the parent of six sons who achieved success at Slade.

J D Rowland was a churchwarden of St Mark's parish. He was a successful businessman in Warwick and became Treasurer of the fund-raising committees for the schools and later served on both CEGS and Slade School Councils. His children attended both schools.



MR. J. D. ROWLAND

Our Early Days

Girls' Schools – St Catharine's and CEGS.

In 1904 a Miss Violet Gibbs acquired a building in Stanthorpe with the intention of setting up a High School for girls. It was called Cambridge Ladies College, a Church of England Girls School, providing boarding facilities. Its growth was slow with only 20 girls enrolled in 1905 but then numbers declined and in 1907 Miss Hannah English became school principal who then offered the charge of the school to Sr. Emma – who was staying in Stanthorpe due to illness. Sr. Emma agreed and Sr. Evelyn was duly selected to be the principal in 1909 with 5 pupils. The school was renamed St Catharine's and ran along the same lines as St Margaret's in Brisbane.

The pupil numbers increased with them having a keen interest in tennis and basketball (netball) and excelling in music. The Prize-giving day in 1911 was in the form of a garden party in the school grounds.

In 1912 Miss Dougharty from St Margaret's was appointed principal. Over the next 20 years the school continued to expand with new buildings needing to be acquired. In 1923 new classrooms, dormitories and a Chapel were built and the old house was vacated. By this time Sr. Elisabeth was in charge. By 1929 there were 79 girls enrolled but the depression took its toll and with no funding coming from the Government or the church it was increasingly difficult to keep the school open even though St Catharine's was firmly established as a fine Christian school and the enrolment in 1936 was eighty, fifty of whom were boarders.

Meanwhile a thriving pastoral industry was being serviced by the busy town of Warwick. The Rev. Glover saw a great need for more educational facilities in Warwick, particularly with boarding accommodation, so set about raising funds to establish Church of England schools.

In 1918 CEGS opened the doors of 'Mie Gunyah', once the home of the Macansh's, to 40 students including 12 boarders. The Sisters of the Sacred Advent were put in charge for its first year. Miss Margaret Brown was appointed as Headmistress. At the end of the year the school was passed over to the Brisbane Diocesan Council of Education.

In 1925 Miss Brown was appointed as Headmistress to the Glennie School in Toowoomba and Miss Phipps from NEGS took over the reigns. During their years as headmistress the school expanded with the girls receiving a well rounded education.

In the 1930s this school was also affected by the Great Depression and Mother Emma was approached to take charge of the school again. In 1937 the school was handed back to the Sisters of the Society of the Sacred Advent and amalgamated with St Catharine's from Stanthorpe. Sr. Katherine was appointed Sister-in-Charge being followed by Srs. Moira, Margaret, Elisabeth, Kathleen, Rachel, Lois, Angela and Kathleen again.



MISS MARGARET BROWN

Slade School for Boys

Slade School was founded in 1926 to provide a Church of England Secondary School for Boys in the healthy climate of the Darling Downs.

The site was chosen in 1918 when property was purchased from 17 different owners consisting of 'Eastmont' and part of Weewondilla Estate.

The school was under the control of the Bush Brotherhood of St Paul which had been established in Charleville in 1905.



MR. A S DOUGLAS - first headmaster of the Slade School

The Fair had to be cancelled on the original date due to rain. It has been rescheduled to May 10

Bargains

& *Busking*
Arts Fair



SATURDAY, May 10th
3pm to 6:45pm
Slade Campus
70 Horsman Rd.

Artist Displays & Demonstrations

Live Music

Food & Drinks

FIREWORKS DISPLAY - 6:45 pm



Sr. Evelyn, Staff and students at St Catharine's, Stanthorpe

WHERE ARE THEY NOW?

Dear Helen,

I have been reading some of the past Kinawah newsletters on the webpage & must congratulate you on the wonderful job you do.

As it is 50 years since I was a new girl at St Cath's in Grade 8 in 1964, I thought this photo might be timely. I also have the full list of names which I had written out at the time.

I have lived in Western Australia for over 36 years now, so have never been to a past students' reunion.

I have corresponded with Sue Bramley, now Donges since she left after Junior in 1966.

My partner and I are going to spend a holiday in Northern NSW over Easter and then drive up to Toowoomba, spending a night in Warwick on the way.

We will be catching up with Sue while there.

This has made me nostalgic. So I have been looking things up & reading all the goss in the newsletters.

I am pleased to hear that the Slade Campus is now being used as a school again.

I can see from some of the photos published in the Kinawah that some of these girls have been to a few of the reunions.

Wishing you all the best for the 2014 Reunion,
Kindest regards,

Kathryn Smith (nee Beech)

The photo of Kathryn's year is on the Photo Wall on Page 8

CONTRIBUTIONS

I was one of the "hundreds of people" who gathered in Brisbane yesterday to farewell the much loved "Man in the Hat", Doug Murray. The veteran radio and TV journalist was an institution with the ABC and Channel Nine. I'm sure many of our country members would remember Doug as host of ABC Countrywide and Landline.

Doug was the son of our very dear past student Pam Muir. It was with great sadness that we were

aware that Pam's extreme illness would prevent her from attending this amazing service. Please remember Pam in your thoughts and prayers.

Madeline Blyth

SLADE CAMPUS



Warwick Christian College

What's Happening at Slade?

(Reporter Peter Ramsay)

While in Warwick recently to help with the finishing touches to our Founders' Room project, assisted by Helen and Bruce, I was able to catch up with Kel Williamson and several of the staff.

The enrolment at the college is now 135 students and this will increase to around 180 students next year as more of the refurbished classrooms come on line.

The college is attracting a lot of interest in Warwick as an excellent centre of learning and is destined to become one of the major players in the near future.

Our efforts in assisting with the restoration work at Slade House and our support for special events such as the Anzac Day Celebration; Bargains 'n' Busking; Speech Night and our AGM Reunions are another way of keeping in touch.

It would be fitting to have a big roll up for this year's AGM as it will be the first opportunity for many of us to see firsthand the results of our fund raising and to see how the college is developing.

A big thank-you to Sheryl, a friend of Bruce Mauch's, for her donation of two paintings by Constable to adorn the walls either side of the fireplace, and to Lynn Williamson for her donation of lace curtains for the room. Such generosity by non-members is very much appreciated by the Association.



Peter and Kel hanging photos

MUSEUM REPORT



While looking for photos to put in the Founders' Room, Peter and Madeline visited St Margaret's to see what they had. Apart from a few photos they were given books, magazines, a cloth badge and a bible which have been put in the museum. Be sure to check out what is on display while there for the AGM and Reunion.

It's amazing what you find out when you read!

On Sunday morning while skimming through the Escape magazine in the Sunday Mail, to see where we could go for our next holiday, or to say 'been there', I found an article on the Sutton's Cider Festival on May 18. It is a celebration of the apple that made the area famous. Being held at Sutton's Cidery it includes tastings of cider, an explanation of the process and entertainment by the Brisbane trio 'Blonde Chocolate'. David Sutton is a past student of Slade School and his Cidery is on our itinerary for the bus trip in June.

Then, when I arrived at church later that morning I received my copy of the Parish News only to find the following article, written by Noela Roil whose father was a teacher and house master at Slade in 1945, about the metal cross outside St Barnabas' Chapel on Norfolk Island that once graced the grounds of Slade.

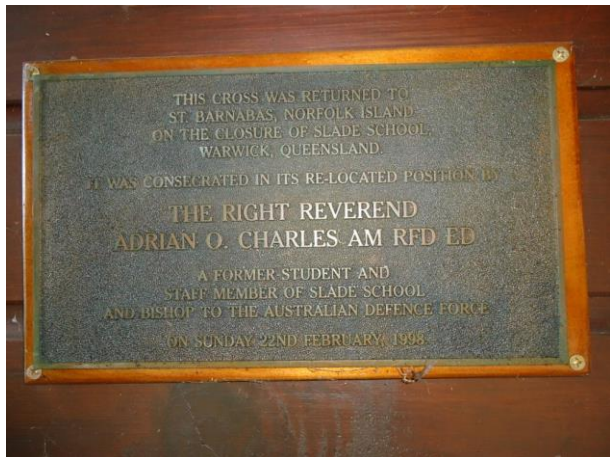
'Included in our orientation tour was a visit to St Barnabas' Chapel, the second Anglican Church on the Island. It was originally built for the Melanesian Mission, whose school and headquarters were based on Norfolk Island between 1866 and 1920. The chapel was consecrated in December 1880. We made a private return visit to the chapel as there was just too much to absorb during the conducted tour. However, what was the highlight of the visit was the discovery of an old metal cross in front of the Parish Centre. In the days of the Mission the cross graced the little chapel in the Bishop's house, which was located on the same site. For many years the cross had stood in the grounds of Slade School in Warwick where I spent the first year of my life when my father was a teacher and house master at the school. The cross was returned to the Island on the closure of Slade and consecrated in its relocated position by Bishop Adrian Charles in February 1998. Bishop Charles was also a former student and staff member of Slade School. I was not able to ascertain the

connection between Norfolk Island and Slade but it was a thrill for me to see a little bit of “home” so far away.’

‘I would love to know the connection between Slade and Norfolk but all I can think is that a lot of the Pacific Islanders and New Guineans went to school at Slade and St Cath’s in the “old days”. Perhaps they were connected to the Melanesian missions.’

Noela Roil

(Perhaps some one reading this can help Noela out by answering this query.)



Bishop Patteson Memorial Cross at Nukapu.

The Martyr Bishop.

(From <http://anglicanhistory.org>)

“Bishop Selwyn, after a visit to England, brought out with him in 1855 John Coleridge Patteson, a young clergyman, son of Sir John Patteson, a judge, and an old friend of the Bishop. John Coleridge Patteson was consecrated first Bishop of Melanesia in 1861. His sympathy with the

natives and power of acquiring their language were never equalled by any other white man. In 1867 he transferred the headquarters of the Mission from New Zealand to Norfolk Island, which was nearer by six hundred miles to the Melanesian Islands, and which combined the advantages of a climate warm enough to suit the children of the Tropics, and healthy enough for the families of English Missionaries. Here the training school of native clergy and teachers has flourished until 1920.

Bishop Patteson was killed by a blow from a club, on the little island of Nukapu, Santa Cruz Group, on September 20th, 1871. This was an act of revenge, esteemed justice by the natives, for the kidnapping of five native boys by labour-traders, who in those days were practically slave-traders. At the same time a white missionary, the Rev. Joseph Atkin, and a native boy, Stephen Taroaniara, were mortally wounded with arrows, and died afterwards of tetanus.”



VALE

Chataway, James Maxwell ‘Jum’ died in hospital on March 13, 2014 at 83 years of age. He was living in Berry and formerly in Cooma. Jum attended Slade from 1938 to 1947 where he was School Captain, a Cadet Lt. and a recipient of full colours for football. After leaving school he joined the RAAF.

He leaves a wife, Sheilagh, and two daughters Anne and Sue.

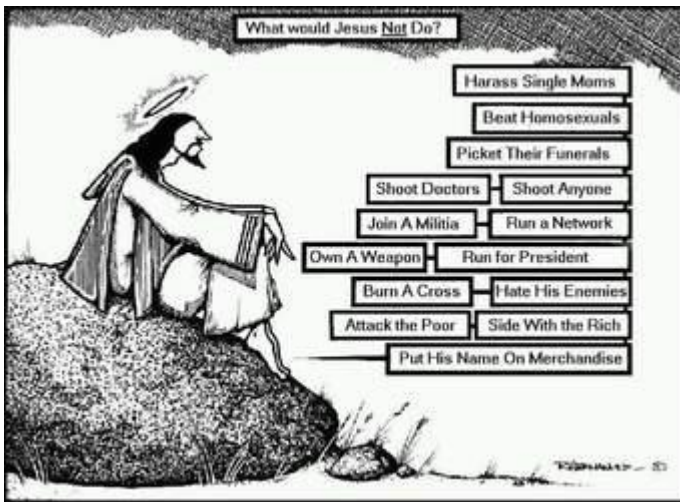


Rowbotham (Donovan) Fay attended St Catharine’s 1946-52, the sister of Ron, Kevin (Digger) and Deanna. Fay passed away unexpectedly on March 9, 2014 aged 78 years. At Fay’s request a private service was held.

PER VOLAR SONATA - PATRIBUS DIGNI ESTOTE

(Born to fly upwards – be worthy of our forebears)

Best wishes to you all for a Happy Easter – a time of reflection and renewal.



P.S. This will be my last edition of Kinawah as, from the AGM in June, I will be handing the reins to Joan White (Clothier) who has agreed to take over as Editor. I have enjoyed compiling each edition as it keeps me in touch with you all and I've loved receiving your emails and hearing all

your news – I've made friends of people I've never met, thank you for that. The many requests from you to find people or information have been great and hopefully I've helped you out sufficiently. Joan brings a new wave of information and a fresh look to the Kinawah, you'll enjoy reading her presentations. Best wishes to you and please feel free to stay in touch.

Helen



Yes, it's a surprise. Shrek!! Farewell from your friendly editor.

Photo Wall



The girls in Grade 7 & 8 in 1964 with Miss Flood in the photo are:-
Back row from left: Mabel Willie, Ruth Postle, Margaret Miller, Christine DeVene, Mary Tutuana, Joan Eastwell, Kathryn Beech, Susan Gale, Annette Hockings, Jean Barber, Margaret Manabona.
Middle row: Sharon Maloney, Trudie Redman, Katherine Elwing, Gail Kiona, Shirley Jorgenson, Linnette Minton, Miss Flood, Elizabeth Kinane, Cheryl Donahue, Catherine Abbott, Pam Dixon, Marlene Erdman
Front row: Suzanne Baker, Susan Bramley, Elizabeth Hutton, Jan Slader, Koi Rima, Susan Hirshfeld, Helen Frost. Kneeling at front: Betty-Ann Loney.



The 1940s Luncheon in February - left and around the table -Christine Donovan (Richmond), Gail Chudleigh (Sutton), Marlene Maher (Young), Madeline Blyth, Dawn Carseldine (Bishop), Betty Burley (Merry).



Enjoying the luncheon in March from left front & around the table is -Judith Stevens (Fletcher), Denise Busk (Padget), Marlene Maher (Young), Christine Donovan (Richmond), Anne Clarke (Armbruster), Gail Chudleigh (Sutton), Dawn Carseldine (Bishop), Madeline Blyth (Eager), Gwen Mahoney (Reis).

SLADE-ST CATHARINE'S PAST STUDENTS' ASSOCIATION

Membership Renewal

PLEASE RENEW MY MEMBERSHIP
JUNE 2014 - MAY 2015

OR

AS A LIFE MEMBER
PLEASE ACCEPT MY DONATION

SURNAME:

FORMER SURNAME (If Applicable):

GIVEN NAMES:

POSTAL ADDRESS:

HOME PHONE:

WORK PHONE:

FAX:

MOBILE:

Don't forget your email address!!

EMAIL:

YEARS AT SLADE/ST CATHARINE'S:

Please Circle your Membership Status

VIETNAM VETERAN: FREE; ORDINARY MEMBERSHIP: \$40; LIFE MEMBERSHIP: \$240;

ASSOCIATE MEMBERSHIP: \$20 (non past students only) DONATION:

SIGNED: DATE:

PLEASE FIND ENCLOSED MY CHEQUE/MAIL ORDER FOR.....

Please make cheque payable to **SSPSA Inc** and post to:

**The Treasurer, SSPSA
PO Box 677
JIMBOOMBA, Qld 4280**

Using Net Access: **BSB: 124-001**

ACCOUNT NO: 90641027

ACCOUNT NAME: SLADE-ST CATHARINES PAST STUDENTS ASSOCIATION

REFERENCE: YOUR NAME

AGM and REUNION 2014

Schedule:

| Date | Event | Location | Time | Cost |
|------------------------------|---|------------------------------------|---------------|--|
| Saturday 07/06/14 | AGM Meeting and refreshments | Slade School Founders' Room | 2:00pm | Nil |
| | Reunion Dinner | Slade School Dining Room | 7:30pm | \$27.50 |
| Sunday 08/06/14 | Bus Tour. 2 course lunch at the Wine College of Tourism. Visiting The Bramble Patch, Vincenzos for coffee, the olive place, apple cider and juice factory and wineries. | Horse and Jockey Motor Inn | 9:00am | Members \$70 Non Members \$75 |

Accommodation:

You must arrange your own accommodation.

ATTENDANCE FORM – RSVP Friday May 31, 2014

To Margaret Stewart
Phone 0746307229
Mobile 0414942497
248 Hermitage Road
Toowoomba, 4350
Email: bmstew1@bigpond.net.au

(Note: All past students & guests are welcome.)

AGM: Person 1: Person 2:

REUNION DINNER: Person 1: Person 2:

BUS TOUR: Person 1: Person 2:

Forward payment to Nigel Faulkner as below:

Please make cheque payable to **SSPSA Inc** and post to:

**The Treasurer, SSPSA
PO Box 677
JIMBOOMBA, Qld 4280**

USING NET ACCESS:

BSB: 124-001

ACCOUNT NO: 90641027

ACCOUNT NAME: SLADE-ST CATHARINES PAST STUDENTS ASSOCIATION

REFERENCE: YOUR NAME